



Printing with DocumentsCorePack

May 2022

(How to install and configure DocumentsCorePack Print Application for Microsoft Dynamics 365)

The content of this document is subject to change without notice. "Microsoft" and "Microsoft Dynamics 365" are registered trademarks of Microsoft Inc. All other products- and company names mentioned are trademarks of their respectful owners.

CONTENT

1 Printing with DocumentsCorePack.....	5
2 DocumentsCorePack Print Service.....	6
2.1 DocumentsCorePack Print Service installation.....	6
2.2 DocumentsCorePack Print Service configuration	6
2.2.1 Start the service configuration	6
2.2.2 Create a new service or select an existing one	7
2.2.3 Select the print jobs.....	8
2.2.4 Select the CRM type.....	9
2.2.5 Open the CRM Connection Advanced Options	10
2.2.6 Start the service.....	12
2.3 How to create a Printer Configuration	13
3 DocumentsCorePack PrintApplication	14
3.1 DCPPrintApplication Installation.....	14
3.1.1 End User License Agreement (EULA)	15
3.1.2 Change the installation folder.....	15
3.1.3 Confirm the installation.....	16
3.1.4 Connect to Dynamics 365.....	17
3.1.5 Finish the installation	19
3.2 DCPPrintApplication Configuration	19
3.2.1 The General-tab	20
3.2.2 The Printer-tab	21
3.2.3 The License-tab	24
3.2.4 The Log-tab	24
4 Cloud Print and Integration.....	26
4.1 Microsoft Universal Print – Printer Configuration for DocumentsCorePack	26
4.1.1 Prerequisites	26
4.1.2 Configure a new Microsoft Universal Print – printer for DocumentsCorePack	27
4.2 Printix – Printer Configuration for DocumentsCorePack.....	31
4.2.1 Prerequisites	31
4.2.2 Configure a new “Printix” Printer for DocumentsCorePack.....	34
4.3 PrintNode – Printer Configuration for DocumentsCorePack.....	39
4.3.1 Prerequisites	39
4.3.2 Configure a new “PrintNode” Printer for DocumentsCorePack.....	40
List of figures.....	45

Preamble

This documentation is intended to guide you through the installation of DocumentsCorePack Print Application in Microsoft Dynamics 365.

With DocumentsCorePack Print Application you have the possibility to set up one or more local printers, which can be used in Dynamics 365 via the DocumentsCorePack Dialog.

Please read this document carefully and follow the steps as described in order to achieve the best results.

Target Audience

This guide is intended for users who would like to benefit from DocumentsCorePack Print Application and have the following minimum skills:

- Basic Microsoft Dynamics 365 Knowledge
- Maintaining and configuring a Microsoft CRM Organization

The installation consists of the following steps (follow each of the steps to complete the installation):

- Installing DocumentsCorePack Print Application for Microsoft Dynamics 365
- Configuring DocumentsCorePack Print Application for Microsoft Dynamics 365

Prerequisites

Microsoft .NET Framework 4.6.2 is required

One of the following versions of Microsoft Dynamics CRM must be available:

- Microsoft Dynamics 365
- Microsoft Dynamics CRM Online

1 Printing with DocumentsCorePack

This article outlines the extensive printing capabilities that DocumentsCorePack provides for the Power Platform and Dynamics 365. Once your local system is set up, you can access printers from any Microsoft Business Application via Power Automate or directly from Dynamics 365 or your PowerApp.

DocumentsCorePack comes with several options to configure printers.

1. **Print Service:** The service allows us to expose network printers to be available for printing via DocumentsCorePack. It comes with proper print service management and logging capabilities to handle multiple printers and high print volumes. The service should be deployed on dedicated print servers to ensure access- and availability. It is recommended when there are multiple network printers.
 - Details: [Service-based printing in DocumentsCorePack](#)
2. **Print Application:** This application allows you to define and enable printing on "personal" printers (e.g., attached to your computer or laptop only) and is intended for small local printer installations. It does not work on servers with multiple printers.
 - Details: [Print Application \(Configuration and Utilization\)](#)
3. **Cloud Print:** Cloud print infrastructure moves print infrastructure to a cloud. This offers advantages in that you save time and money on print installation and server installation, reduce maintenance and local updates, and add a great deal in terms of scalability, functionality, and accessibility. Therefore, they can be used from any web app regardless of whether these printers are installed on the device you are using and regardless if you have permission to install a printer on the device.
 - Details: The major cloud print providers are [Microsoft Print](#), [Printix](#) and [PrintNode](#)

2 DocumentsCorePack Print Service

DocumentsCorePack offers a service-based printing option which is additionally available to the already known plugin-based printing option. This additional option is based on a service which is running in the background

2.1 DocumentsCorePack Print Service installation

First of all, you have to install [DocumentsCorePack for Microsoft Dynamics 365](#). For further information have a look [here](#).

Step through the wizard and create a new port. Type in a simple name for the printer, without using spaces. This makes it easier for you to retype the printer name in the different workflows of DCP Server. Once finished, please try to print a test page to see if it works correctly.

2.2 DocumentsCorePack Print Service configuration

2.2.1 Start the service configuration

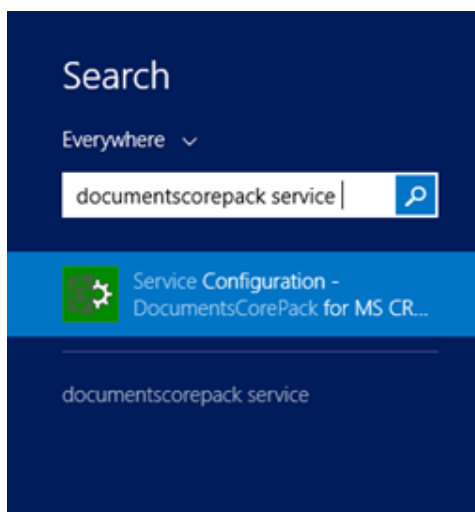


Figure 1: Start service configuration

Start the *Service Configuration DocumentsCorePack for Dynamics 365* from within the Windows start menu:

2.2.2 Create a new service or select an existing one

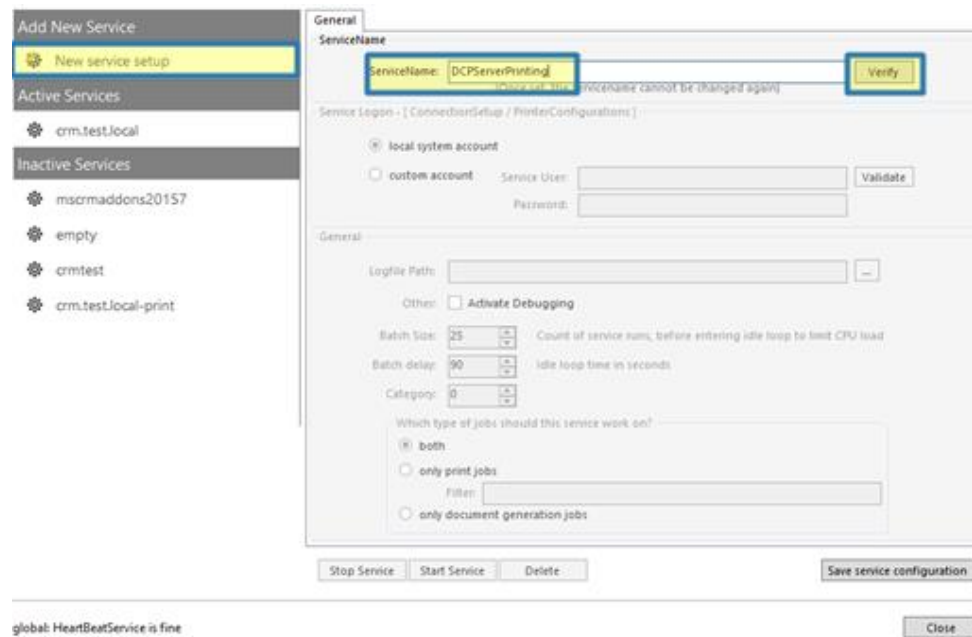


Figure 2: Create a new service or select an existing one

Navigate to the general tab. If you want to create a new service, type in a name of the service and click on the **[Verify]**-button.

2.2.3 Select the print jobs

Now you have to define which type of jobs the service should work on. Check only *printjobs*. Furthermore, you have the possibility to set a filter for the printer to be used. Setting this filter is essential, for example in the following case:

If you have offices in two different countries (e.g. America and Austria), you can type in the name of the printer located at your site (e.g. at your Austrian office) in order to avoid that your documents are printed by the printer located at the other site (e.g. at your American office).

The screenshot shows a configuration form with the following elements:

- Logfile Path:** A text input field with a browse button (three dots).
- Other:** A checkbox labeled "Activate Debugging" which is currently unchecked.
- Batch Size:** A spinner control set to 25, with a description: "Count of service runs, before entering idle loop to limit CPU load".
- Batch delay:** A spinner control set to 90, with a description: "Idle loop time in seconds".
- Category:** A spinner control set to 0.
- Which type of jobs should this service work on?:** A radio button group with three options:
 - both
 - only print jobs. Below this option is a highlighted yellow box containing a "Filter:" label and the text "HP178c56".
 - only document generation jobs

Figure 3: Create a new service or select an existing one

2.2.4 Select the CRM type

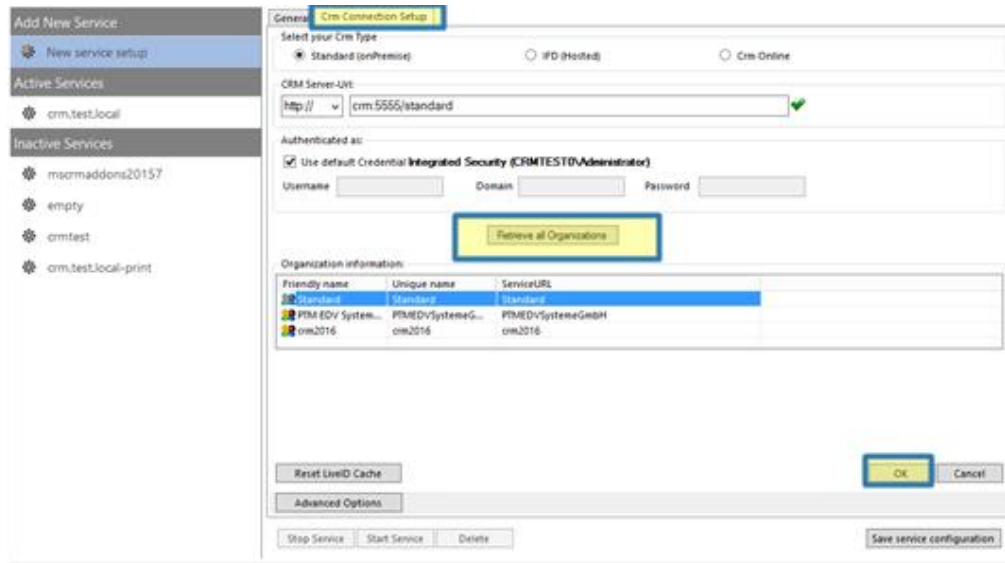


Figure 4: Select the CRM type

Now switch to the *CRM Connection Setup*-tab, select your CRM type, type in the CRM Server-URL and click on the **[Retrieve all Organizations]**-button. Then click on the **[OK]**-button to confirm. This window opens.

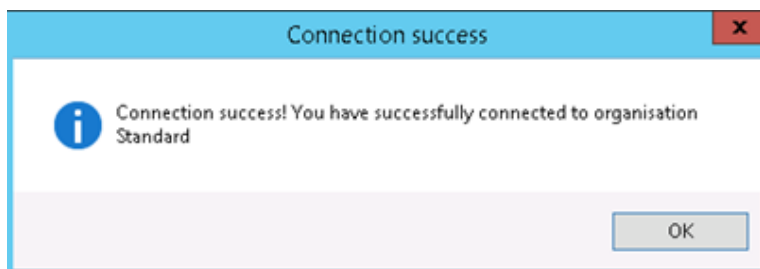


Figure 5: Connection success

Now click on the **[Save Service Configuration]**-button. In case the below message box appears, simply click on the **[OK]**-button as well.

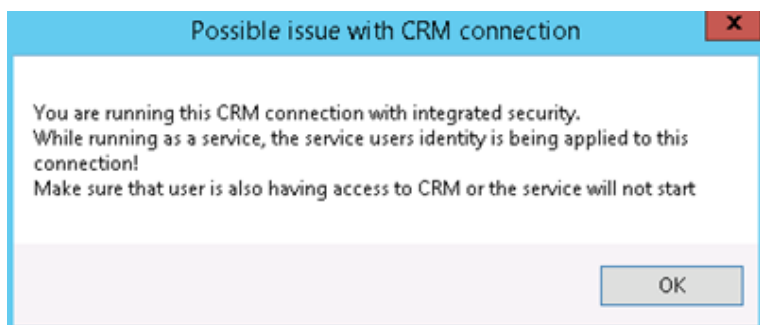


Figure 6: Possible issue with CRM connection dialog

2.2.5 Open the CRM Connection Advanced Options

Within the "CRM Connection Setup"-tab click on the **[Advanced Options]**-button.

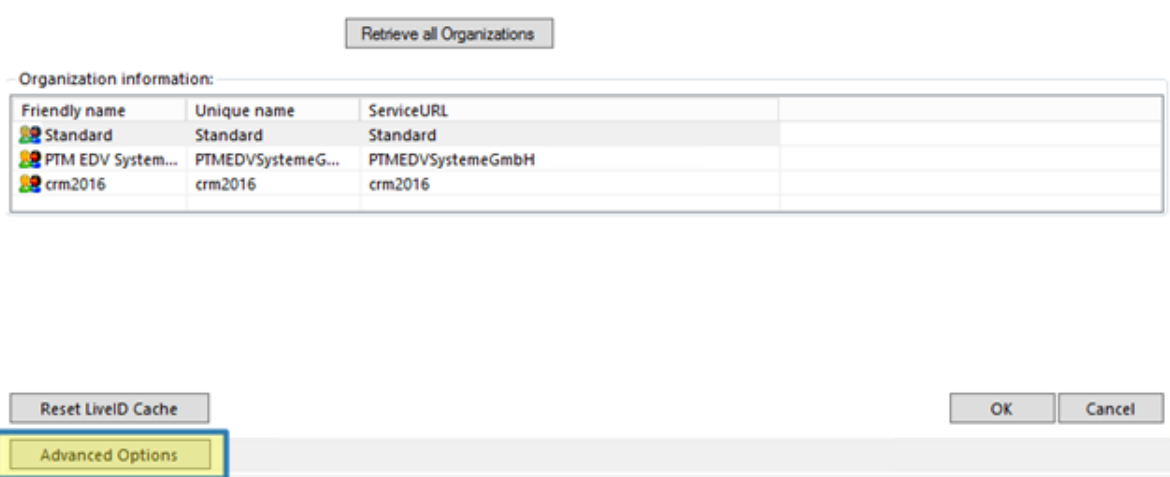


Figure 7: Possible issue with CRM connection dialog

This action opens the Connection Dialog. Within the Advanced Settings of the Connection Dialog, you can set your CRM online option, enable your proxy settings, and define the credentials etc. Return to the CRM Connection tab to save your settings. For further information on the Connection Dialog, please have a look at our [Connection Dialog Documentation](#).

Logon information

Welcome to your Dynamics 365 Connection setup.

Please specify your connection details to connect to Dynamics 365. If you do not know the connection details, please contact your system administrator

Dynamics 365 Connection **Advanced Settings** Log

Existing Profiles [HKLM] https://crm306852.crm4.dynamics.com Manage

Select your Dynamics 365 Type

OnPremise
 IFD/Hosted
 Online
 AppAccess

Dynamics 365 Server-Url:

https://crm306852.crm4.dynamics.com ✓

Authenticated as:

Use default Credentials **admin@CRM306852.onmicrosoft.com**
 Prefer Server2Server authentication

Username
 Domain
 Password

Retrieve all

Organization information:

Friendly name	Unique name	ServiceURL
Contoso	org858e3467	https://crm306852.crm4.dynamics.com/XRMServices/...

OK Cancel

Figure 8: CRM connection setup

2.2.6 Start the service

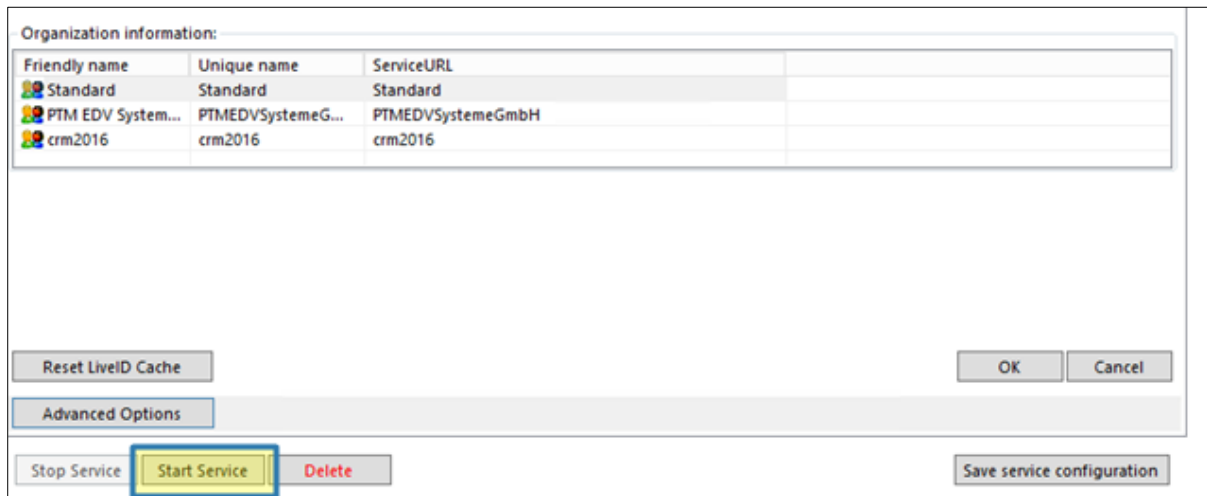


Figure 9: Click on the start service button

Afterwards, click on the **[Start Service]**-button and the service will start to run in the background.

To continue, go to the new added service called *DCPServerPrinting* (1) and switch to the *Printer*-Tab (2). Select your printer there:

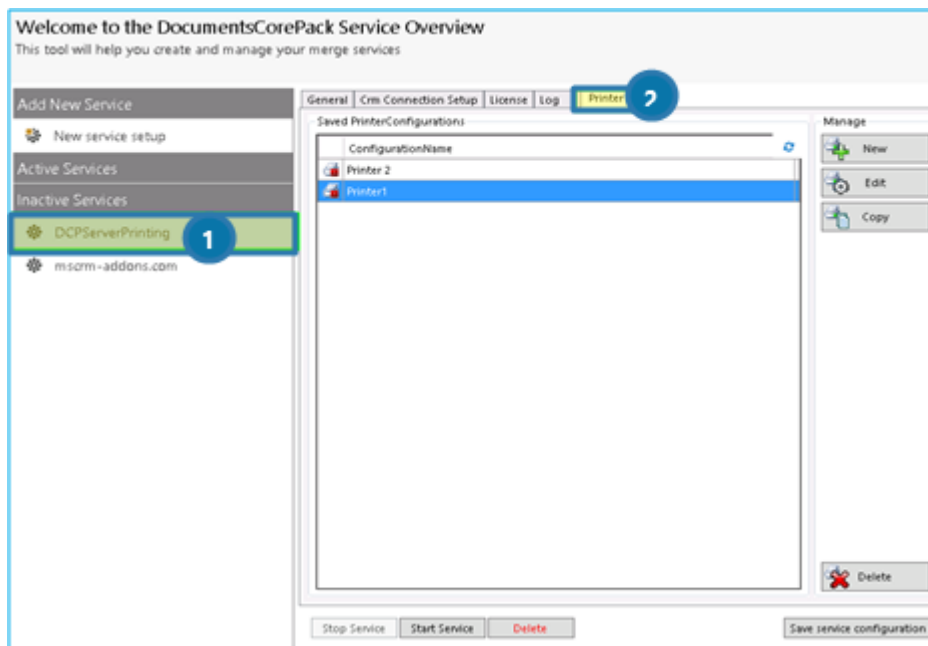


Figure 10: Select a printer

2.3 How to create a Printer Configuration

In order to create a new configuration, click on the **[New]**-button in the *DocumentsCorePack ServerBased Printing*-Tab.

This action will open the following dialog where you must type in a Configuration name before you can go on:

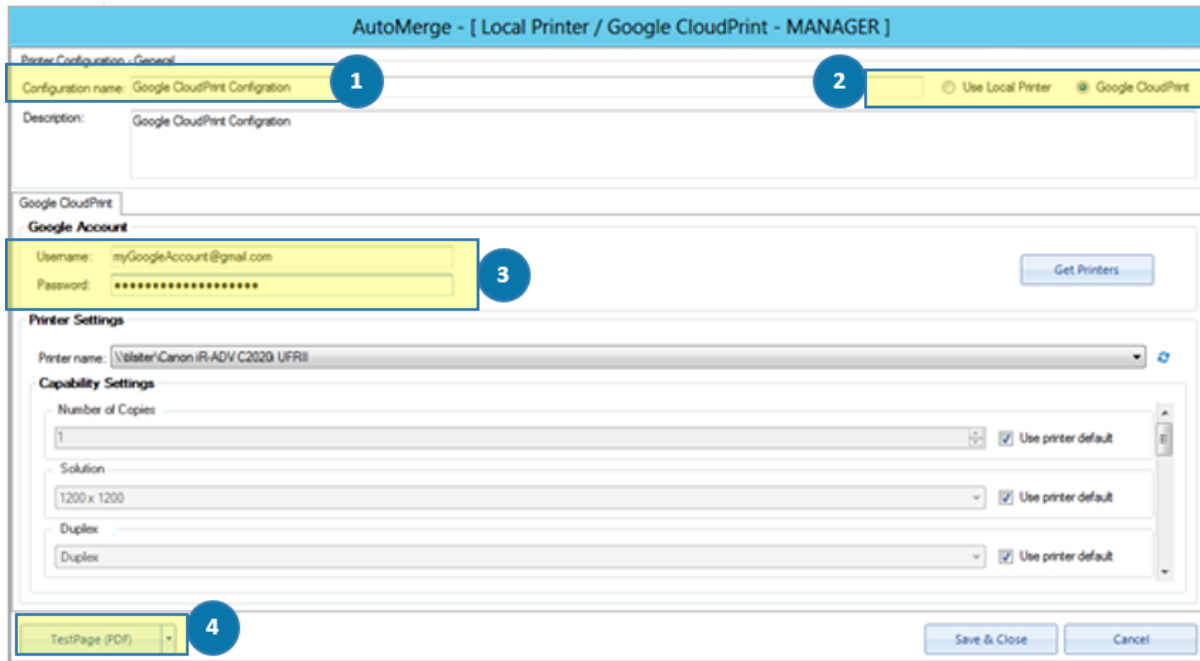


Figure 11: Configure a printer

- 1 You must specify a configuration name to be able to create a printer configuration.
- 2 Google CloudPrint Mode is enabled per default.



Modifying the printer type will discard all changes you have done on the current setting!

- 3 Supply your Google account credentials to retrieve the list of available printers for that account.
- 4 Click on the drop-down button or open a saved document to print a TestPage



Figure 12: Local printer test pages

After having configured and started the service for printing, you can start to configure a workflow including the service-based printing option.

3 DocumentsCorePack PrintApplication

This chapter explains how to install the DCP Print Application. Before you start the installation, you have to download the DocumentsCorePack Print Application. You can download files [here](#).

3.1 DCPPrintApplication Installation

Run the "DCPPrintApplication for Dynamics 365.exe" setup file. You will see the following window. Hit the **[Next >]**-button to continue with the license agreement.

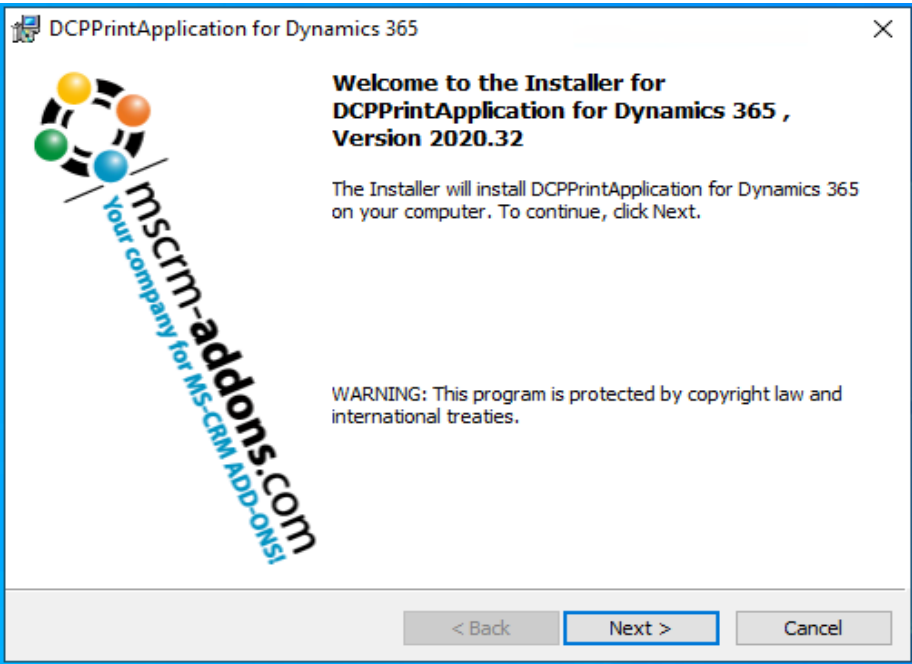


Figure 13: Installer DCPPrintApplication for Dynamics 365

3.1.1 End User License Agreement (EULA)

Please accept the license agreement by checking the first checkbox (highlighted in yellow) and click on the **[Next >]**-button.

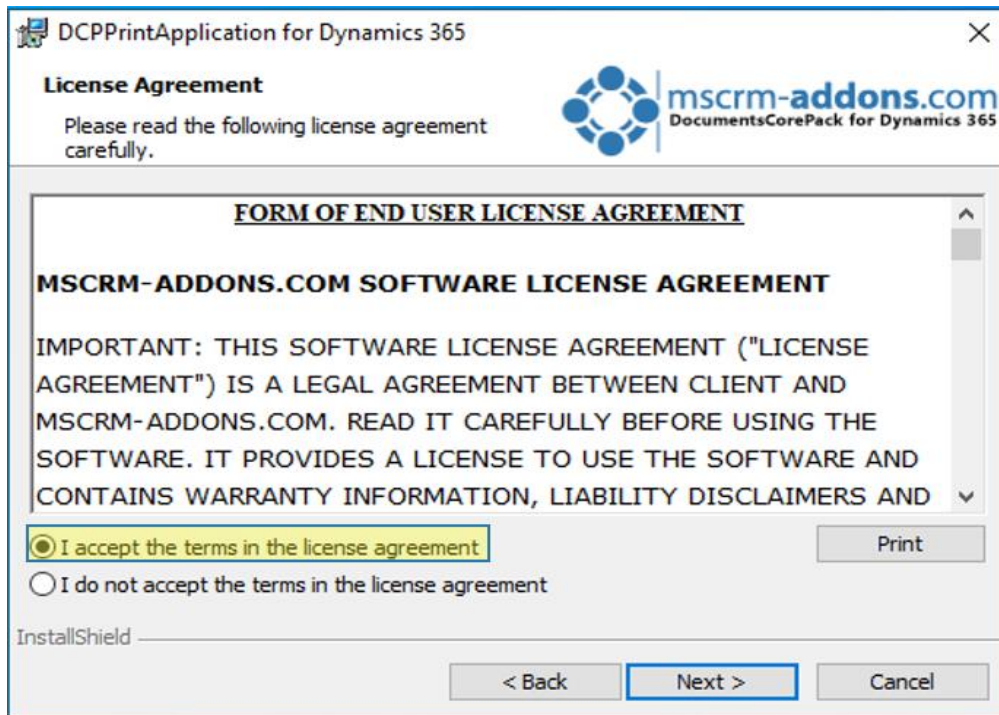


Figure 14: End User License Agreement (EULA)

3.1.2 Change the installation folder

If you want to change the installation folder, please hit the ① **[Change]**-button to specify a different installation path. Click on the ② **[Next]**-button to continue.

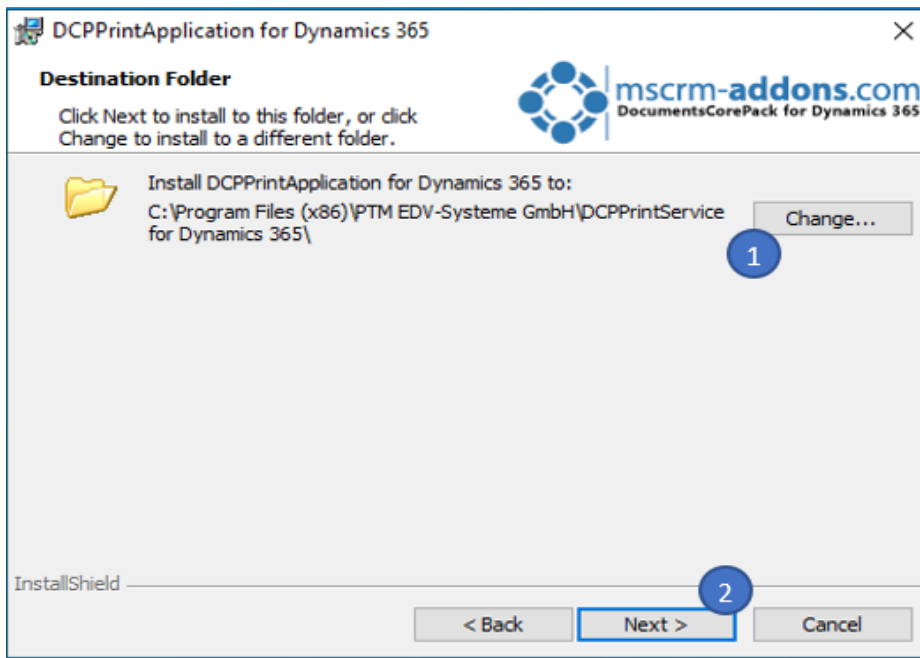


Figure 15: Change installation folder

3.1.3 Confirm the installation

Click on the **1 [Install]**-button to begin the installation as you can see in the figure below.

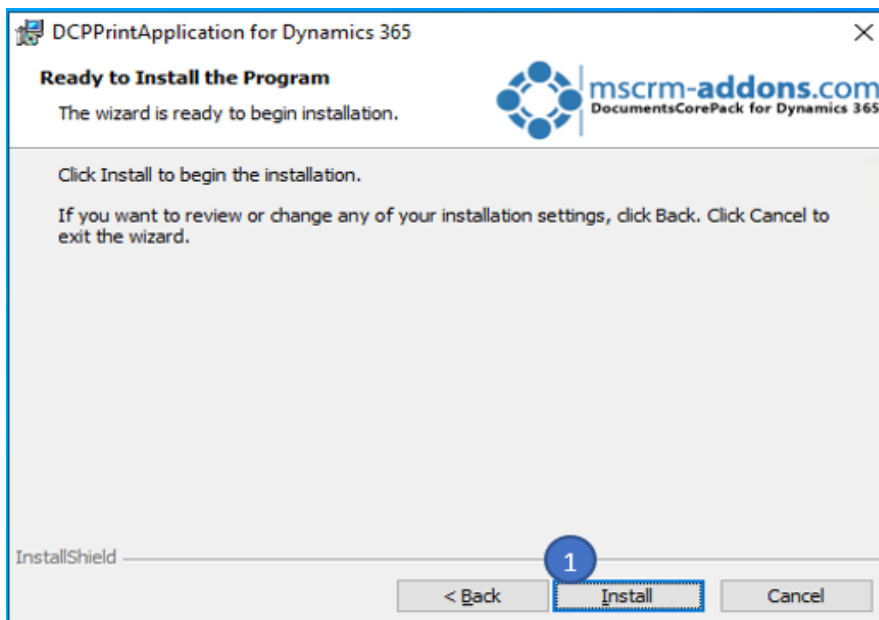


Figure 16: Confirm the installation

While the installation is running, the window below appears. This may take several minutes.

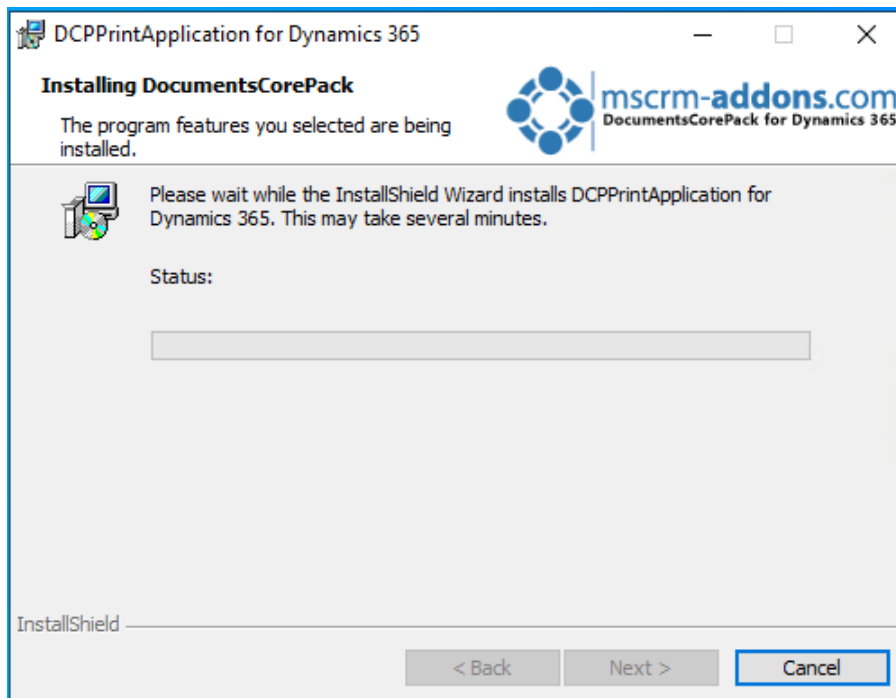


Figure 17: Installation status Connect to Dynamics 365

3.1.4 Connect to Dynamics 365

Next, you have to configure your Dynamics 365 server. Therefore, you have to select your **1** Dynamics 365 Type (Online in this case), enter your **2** Dynamics 365-Url and add your login credentials by filling in the fields your **3** username and password.

Click on the **4** **[Retrieve all]**-button and as soon as the organizations are retrieved, choose one and press the **5** **[OK]**-button, as you can see in the figure below.

Loton information

Welcome to your Dynamics 365 Connection setup.

Please specify your connection details to connect to Dynamics 365. If you do not know the connection details, please contact your system administrator

Dynamics 365 Connection | Advanced Settings | Log

Existing Profiles [HKLM] https://crm306852.crm4.dynamics.com Manage

Select your Dynamics 365 Type

OnPremise IFD/Hosted **1** Online AppAccess

Dynamics 365 Server-Url:

https://crm306852.crm4.dynamics.com **2** ✓

Authenticated as:

Use default Credentials **admin@CRM306852.onmicrosoft.com** Prefer Server2Server authentication

Username **admin@CRM306852.** **3** Domain **3** Password **.....**

4 Retrieve all

Organization information:

Friendly name	Unique name	ServiceURL
Contoso	org858e3467	https://crm306852.crm4.dynamics.com/XRMServices/...

5 OK Cancel

Figure 18: Dynamics 365 Connection setup

3.1.5 Finish the installation

The DCPPrintApplication Configuration will start automatically for the organization you selected during the setup. Click on **[Finish]** to continue.

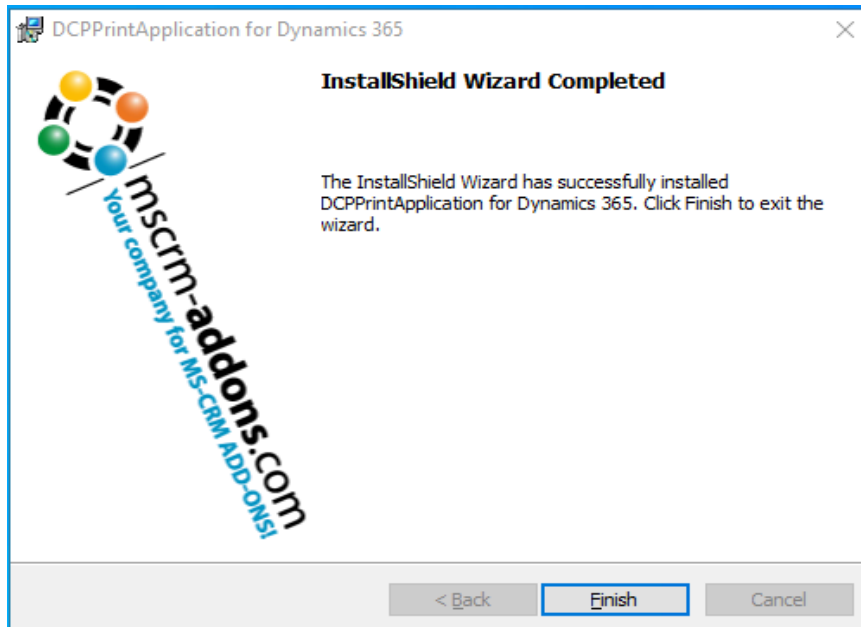


Figure 19: Finish installation

3.2 DCPPrintApplication Configuration

After finishing the installation, the DCPPrintApplication Configuration window opens. Within the following chapter, you will be provided with an overview of the different tabs and their functionality.

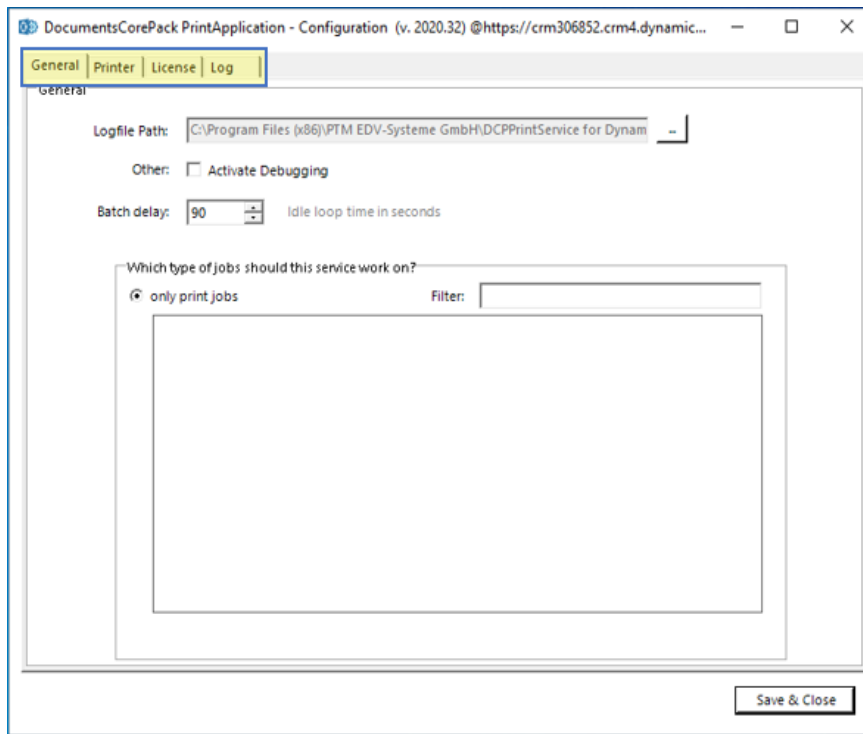


Figure 20: DCPPrintApplication Overview-tabs

3.2.1 The General-tab

The *General tab* provides you with the opportunity to set the general settings of your future application (see figure above). Here you have the possibility to activate debugging, set a batch delay (90 seconds is set per default, which is the delay between the application checking for new print jobs).

You can also add & remove printers, that your application will use.

3.2.2 The Printer-tab

The *Printer*-tab provides you with the possibility to create a ① new configuration, edit an existing one, copy a configuration and change the settings and also to ② delete configurations.

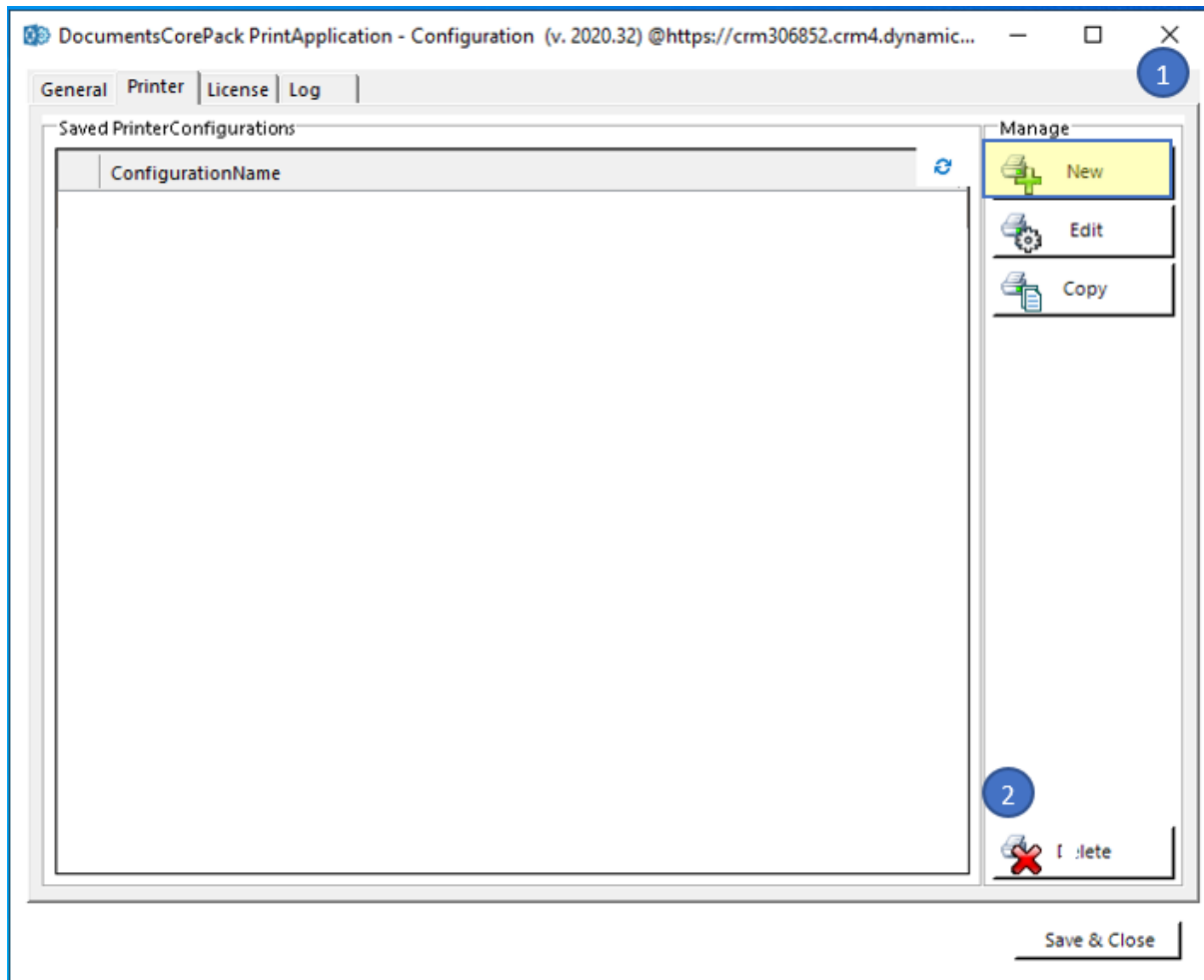


Figure 21: DCPPrintApplication Printer-tab

In order to create a new configuration, click on the **[New]**-button in the *Printer*-tab, highlighted in yellow. This action will open the following dialog. Here you have to:

- 1 Specify a configuration name to be able to create a printer configuration. The configuration name (highlighted in yellow below) consists of printer@**username** (the user which has access to the local printer) + **computer name** (the computer on which the application is running)
- 2 Select the printer from the drop-down menu. You can only use the printer created with your user and your machine.
- 3 Hit the **[Save & Close]**-button.

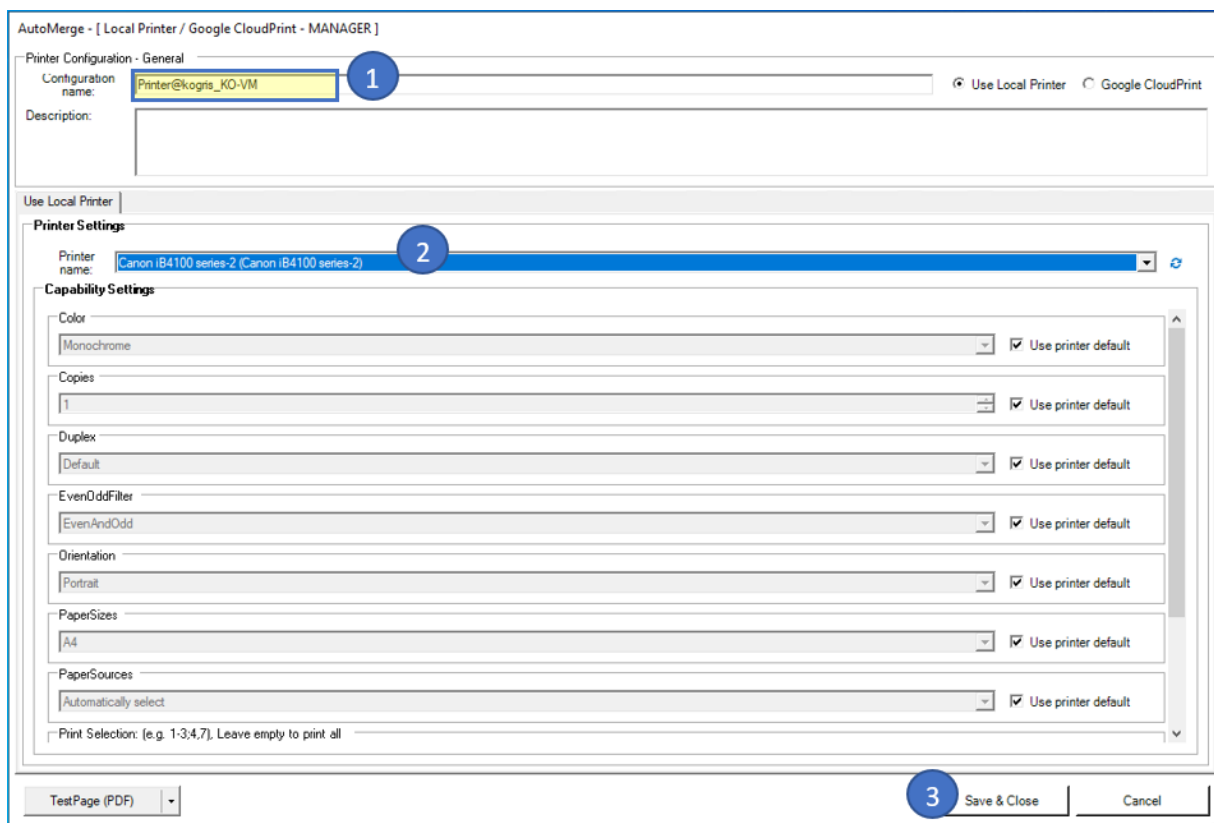


Figure 22: Configure a printer

After saving, you will see the saved printer configuration in the *Printer*-tab.

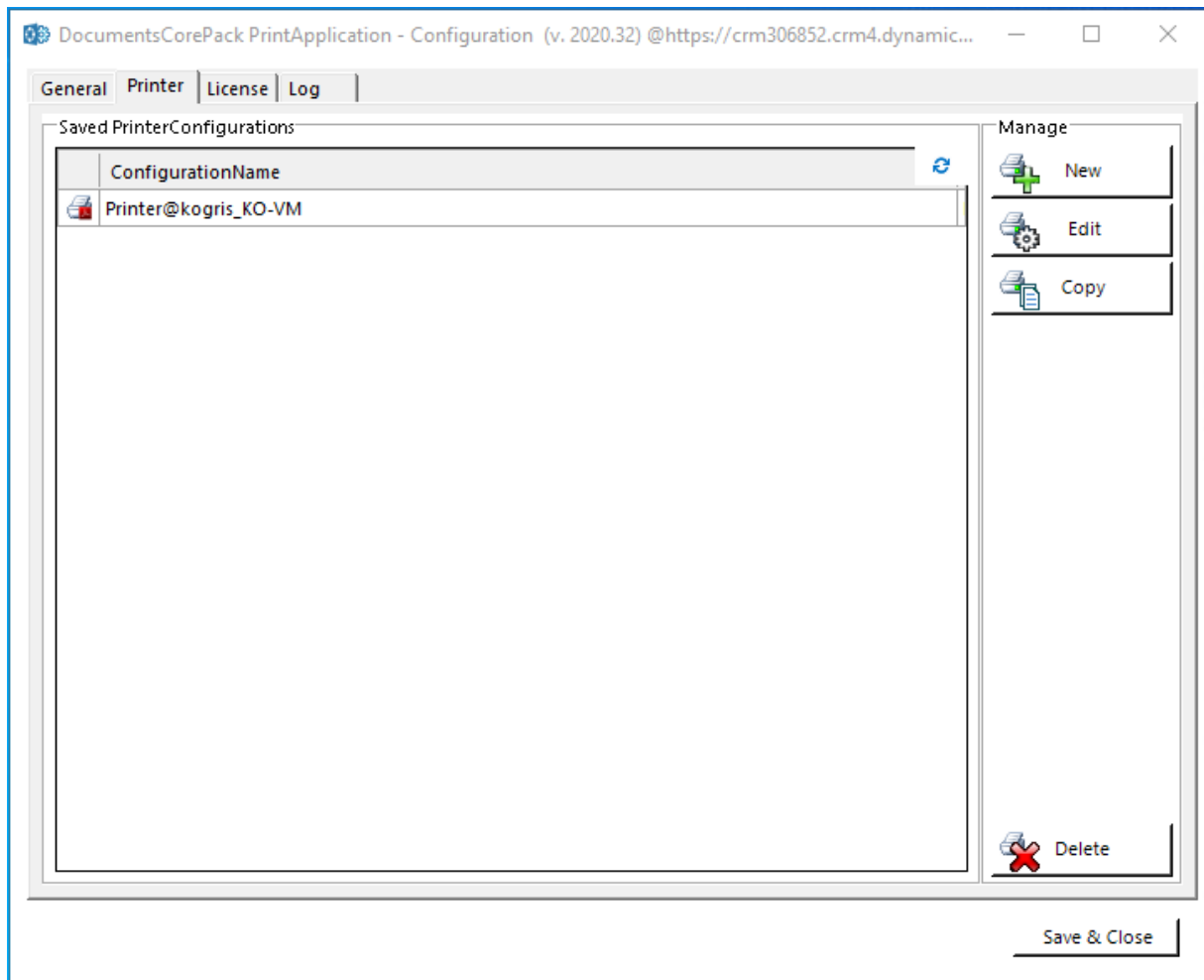


Figure 23: DCPPrintApplication Printer-tab: Configured printer

The saved printer configuration is also automatically added in the *General*-tab in the Filter-area as you can see in the figure below. To remove a printer, please select it and click on Delete on your keyboard.

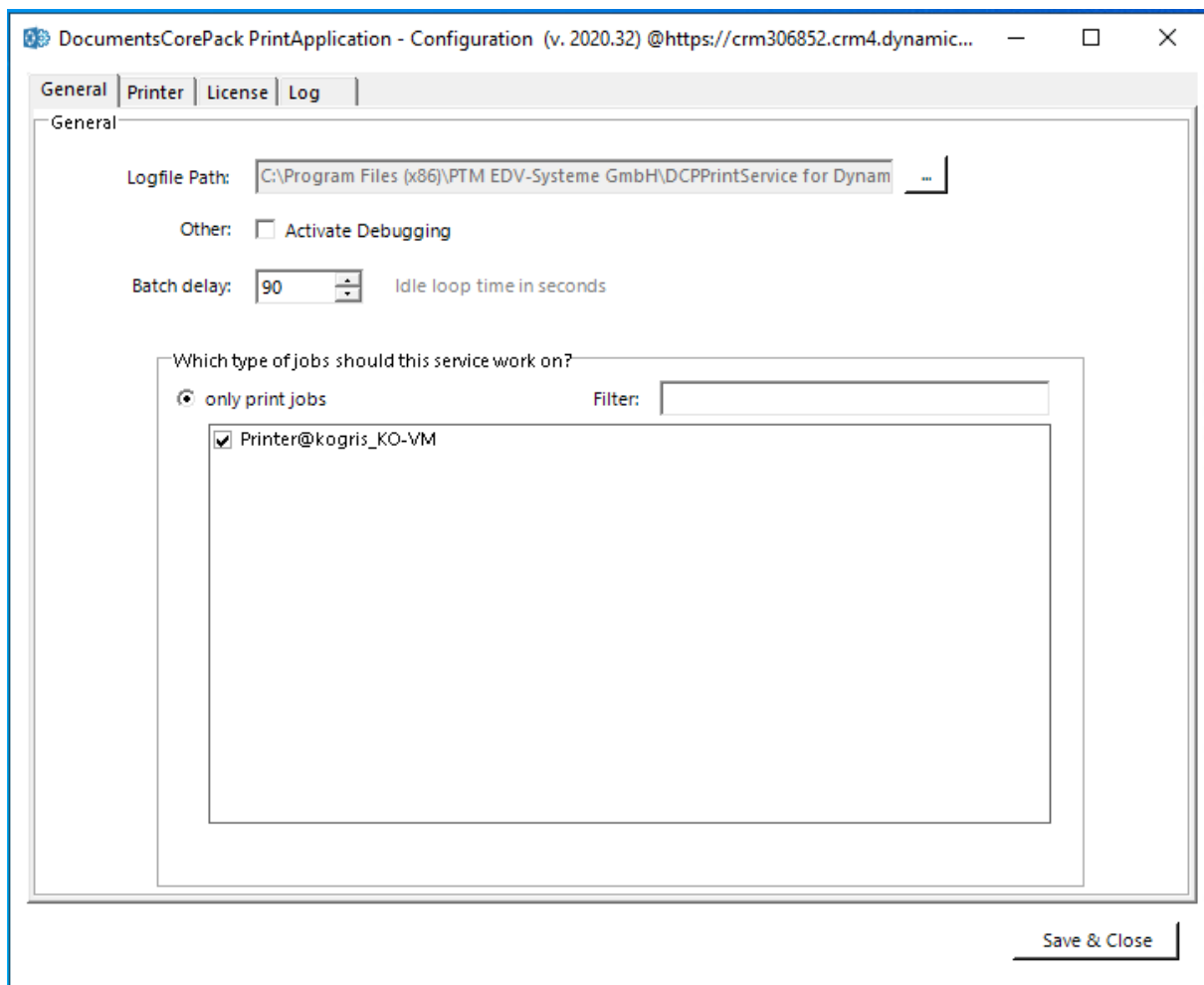


Figure 24: DCPPrintApplication General-tab/ Configured printer

3.2.3 The License-tab

The *License-tab* enables you to quickly check your license state. If the license is invalid, the application will not start. For more information on the license manager, please have a brief look at our [Licensing Guide](#).

3.2.4 The Log-tab

The log provides an excerpt of the DCPPrintApplication event log, filtered for this specific application. This helps you to identify any issues with the application.

Hit the **[Save & Close]**-button to finish the DCPPrintApplication configuration. You will now find the DocumentsCorePack Print Application in your system tray. Right-clicking on the icon brings up a context menu, allowing you to connect to a different organization, open the config, restart the application, or quit it.

The installer also adds an autorun entry to your local user account, starting the DCP Print application with your windows.

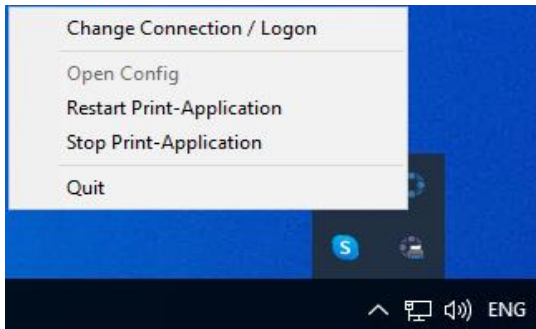


Figure 25: DCPPrintApplication in the Task Pane

If you now hit the **[Create Document]**-button, the DocumentsCorePack Dialog provides you with the new "Print document"-option, where you are able to select the printer you have configured before (highlighted in yellow).

Please notice: You can configure as many local printers as you like.

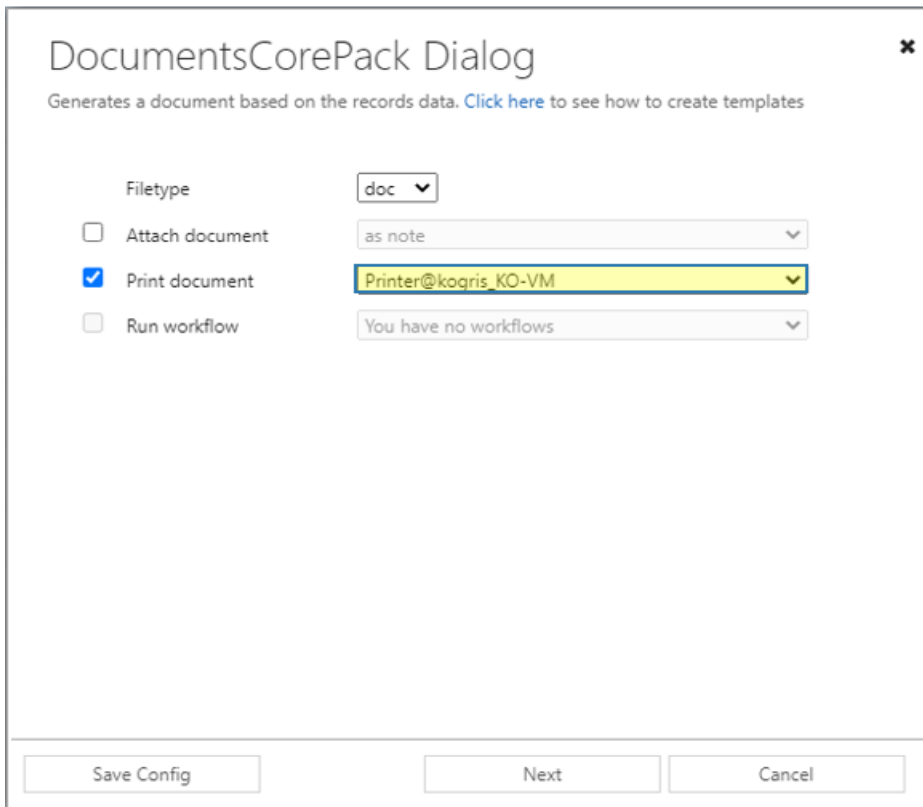


Figure 26: DocumentsCorePack Dialog – Print

4 Cloud Print and Integration

Cloud print infrastructure moves print infrastructure to a cloud. This offers advantages in that you save time and money on print installation and server installation, reduce maintenance and local updates, and add a great deal in terms of scalability, functionality, and accessibility. Therefore, they can be used from any web app regardless of whether these printers are installed on the device you are using and regardless if you have permission to install a printer on the device.

There are three major cloud print providers DocumentsCorePack integrates with. The following step-by-step guides illustrate how to configure printers via the respective provider:

- Microsoft Print
- Printix
- PrintNode

4.1 Microsoft Universal Print – Printer Configuration for DocumentsCorePack

This chapter explains how to configure “Microsoft Universal Print” printers to be used for printing with DocumentsCorePack.

4.1.1 Prerequisites

First of all you have to install, configure and license the [Microsoft Universal Print Connector](#) (see also [Microsoft licenses](#) for licensing information).

Within the [Microsoft Universal Print Dashboard](#) you can see all available printers.

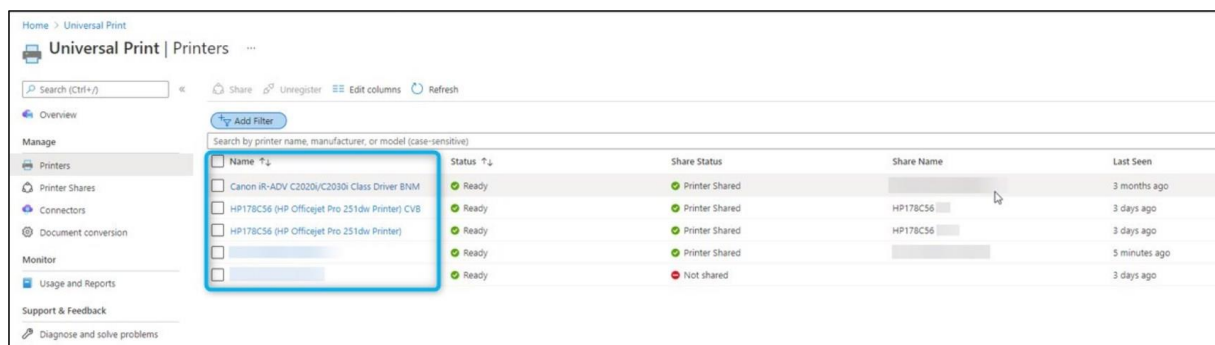


Figure 27: Universal Print Dashboard

Important: After the installation, the following Powershell script must be executed on the computer where the Universal Print Connector was installed:

```
PS C:\windows\PrintConnectorSvc> .\UpdateConnectorConfigJson.ps1 -Feature Connector -Name enable-pdftoxps -Value true
```

4.1.2 Configure a new Microsoft Universal Print – printer for DocumentsCorePack

First, log in to the [DocumentsCorePack Service Configuration](#).



Your DocumentsCorePack Service needs to be configured to handle both: Document and Print Jobs. Double click on your service and ensure the Job Type is set to "Both"

Modify your DocumentsCorePack Service

Set up your CRM connection (restdemo20 as John@restdemo18.onmicrosoft.com) Connection Profile

Service Name (cannot be changed) restdemo20 ✓

DocumentsCorePack Instance ? EU West Public

Job Type ? Print Jobs Document Generation **Both**

Use CRM integrated SharePoint ?

'Create Document' Button Configuration ? Select Entities

Show Advanced Options

Figure 28: Service configuration

Once confirmed, you can start by clicking **[configure cloud print]**.

Hello kog Version 2020.03.7122.2185

On this page you can configure DocumentsCorePack or AttachmentExtractor for your CRM organization. Take a quick tour

DocumentsCorePack: ServerBased (2) AttachmentExtractor (1)

Your available DocumentsCorePack services Search...

ID	Name	Status	Job Type	Data (this m...	Organization	CRM	Instance
36...	526763938d1642779202dc57501a...	Stopped	Document G...	0 B	CRM499620	https://org742f3791.crm4.dy...	https://autom...
36...	unq5f4e519c608d4307a7e2d7024...	Running	Document G...	175,06 KB	CRM614680	https://org0f6f8b03.crm4.dy...	https://autom...

Navigation icons: +, -, search, refresh, etc.

Figure 29: DCP-Service Configuration

This *Cloudprint Configuration* opens. Press the **[+]**-button to continue.

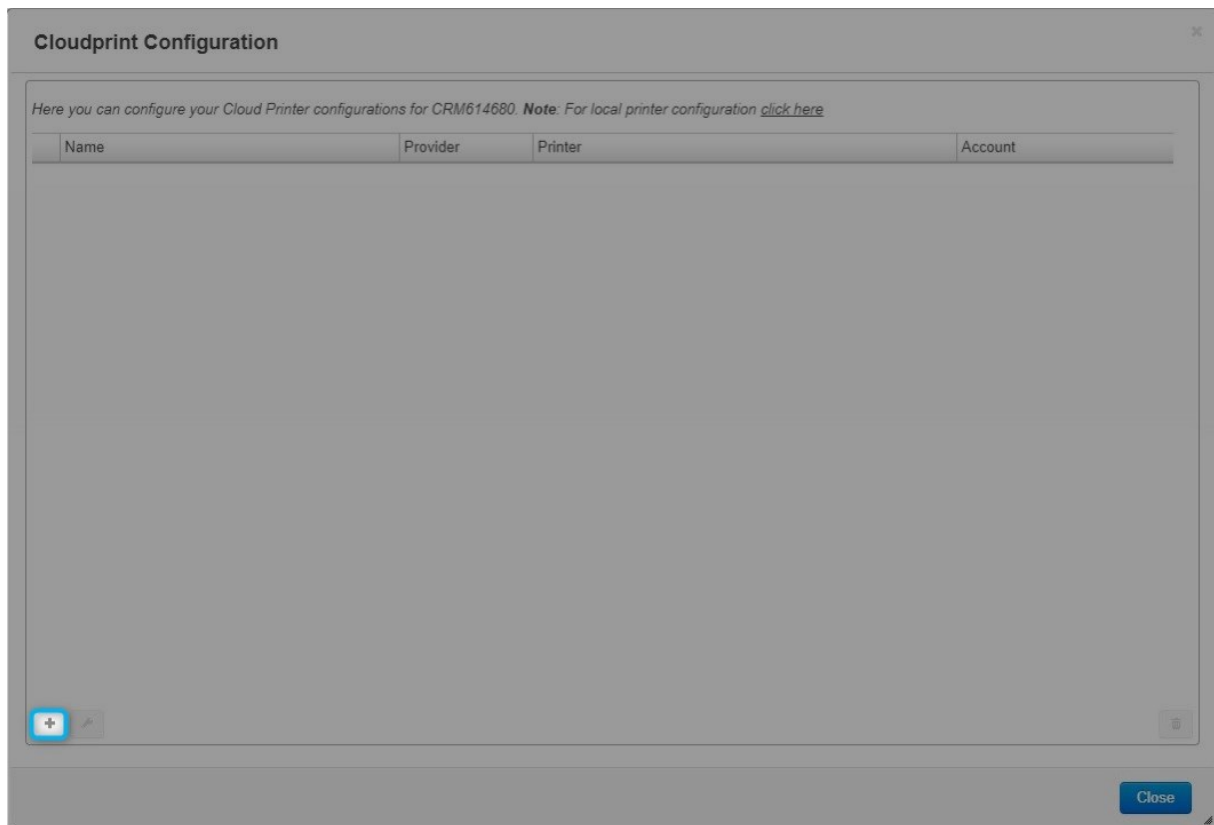


Figure 30: Cloudprint configuration

The „Configure Cloud Printer Configuration“-site is shown. To configure your Universal Print – Cloud Printer, you have to

- 1 Select “Universal Print”.
- 2 Name your configuration.
- 3 Press „Get available printers”.

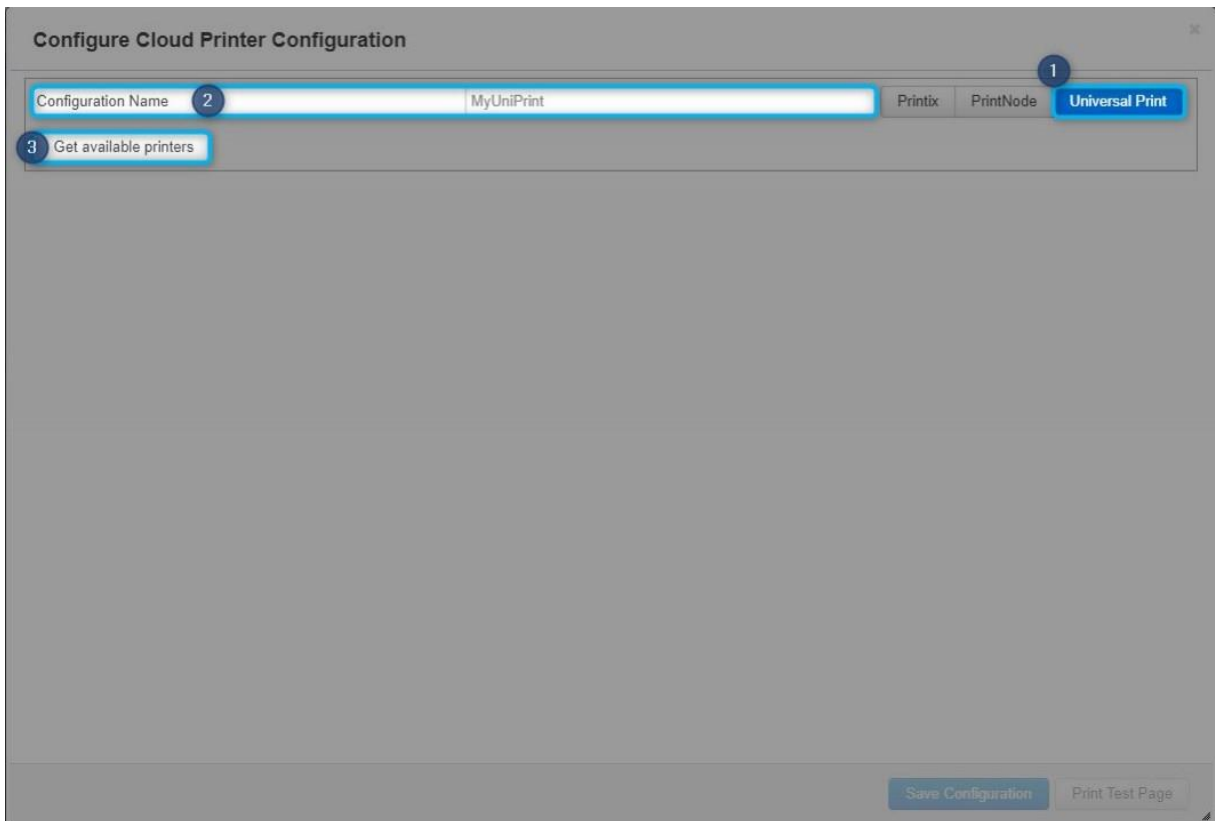


Figure 31: Get available printers

You are requested to sign in in your Microsoft account.

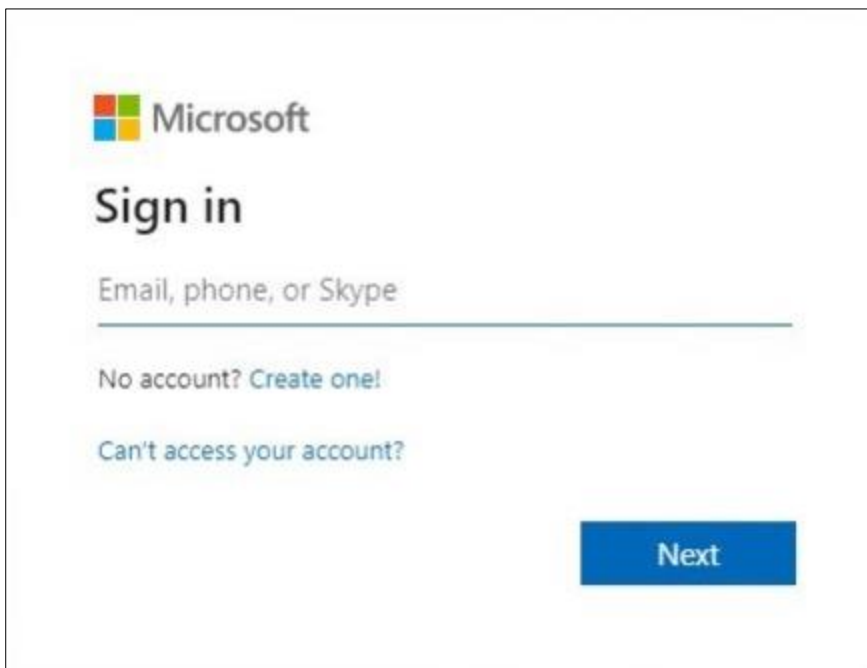


Figure 32: Sign in

All available printers in your environment are shown. Select the printer you want to configure and finish with a click on **[Save Configuration]**.



The "Printer Settings" allow to overrule some of the basic printer settings retrieved from Microsoft Universal Print. Options listed depend on your printer and/or print driver.

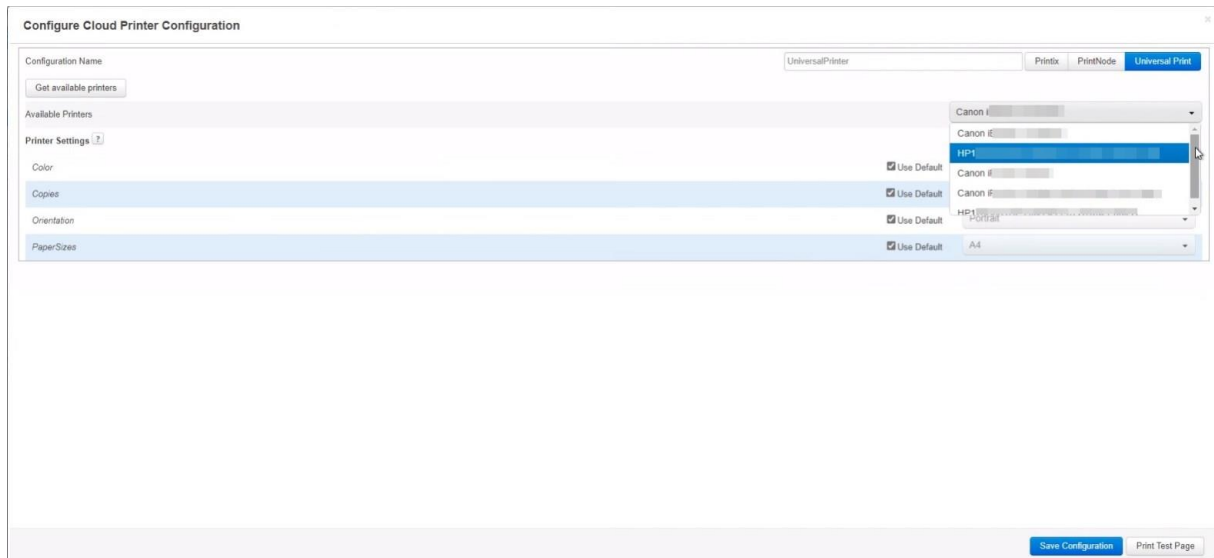


Figure 33: Available printers in your environment

Congratulations! The print application "Universal Print" is successfully installed.

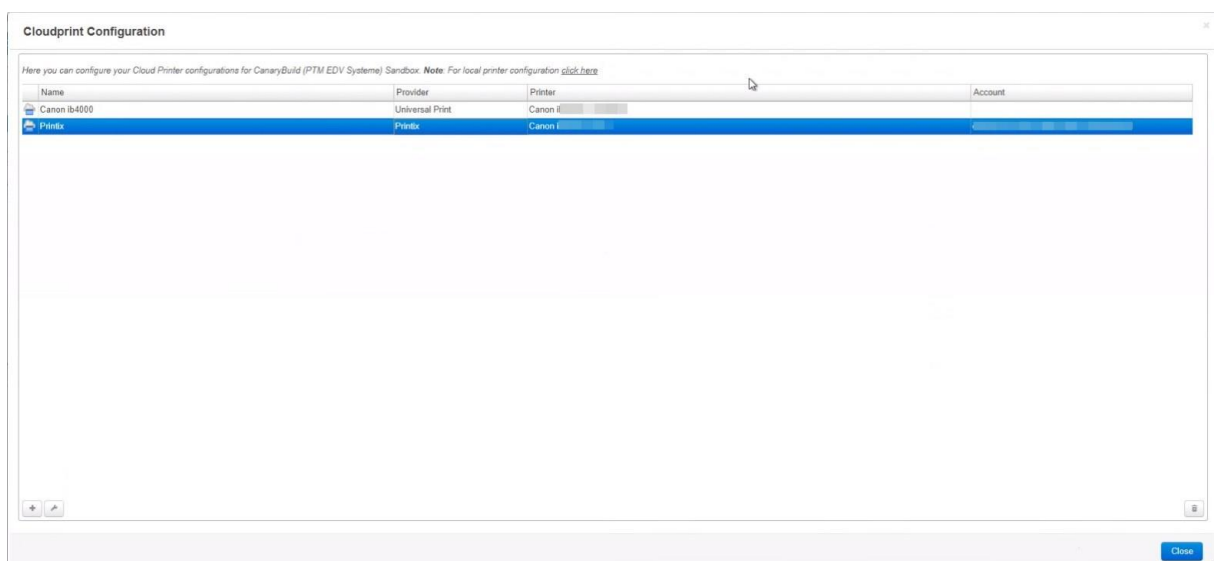


Figure 34: Installed Universal Print

4.2 Printix – Printer Configuration for DocumentsCorePack

This chapter explains how to configure “Printix” printers to be used for printing with DocumentsCorePack.

4.2.1 Prerequisites

You have to be a Printix customer to use this application and printers have to be available in the Printix-portal (as can be seen in Figure 1). Learn how to configure your printer [here](#).

Next we need to get a Client ID, a Client Secret and a Tenant ID to enable printing via DocumentsCorePack. You can get this information as follows:

Login to your Printix dashboard: [https://\[customername\].printix.net/admin/#/dashboard](https://[customername].printix.net/admin/#/dashboard)

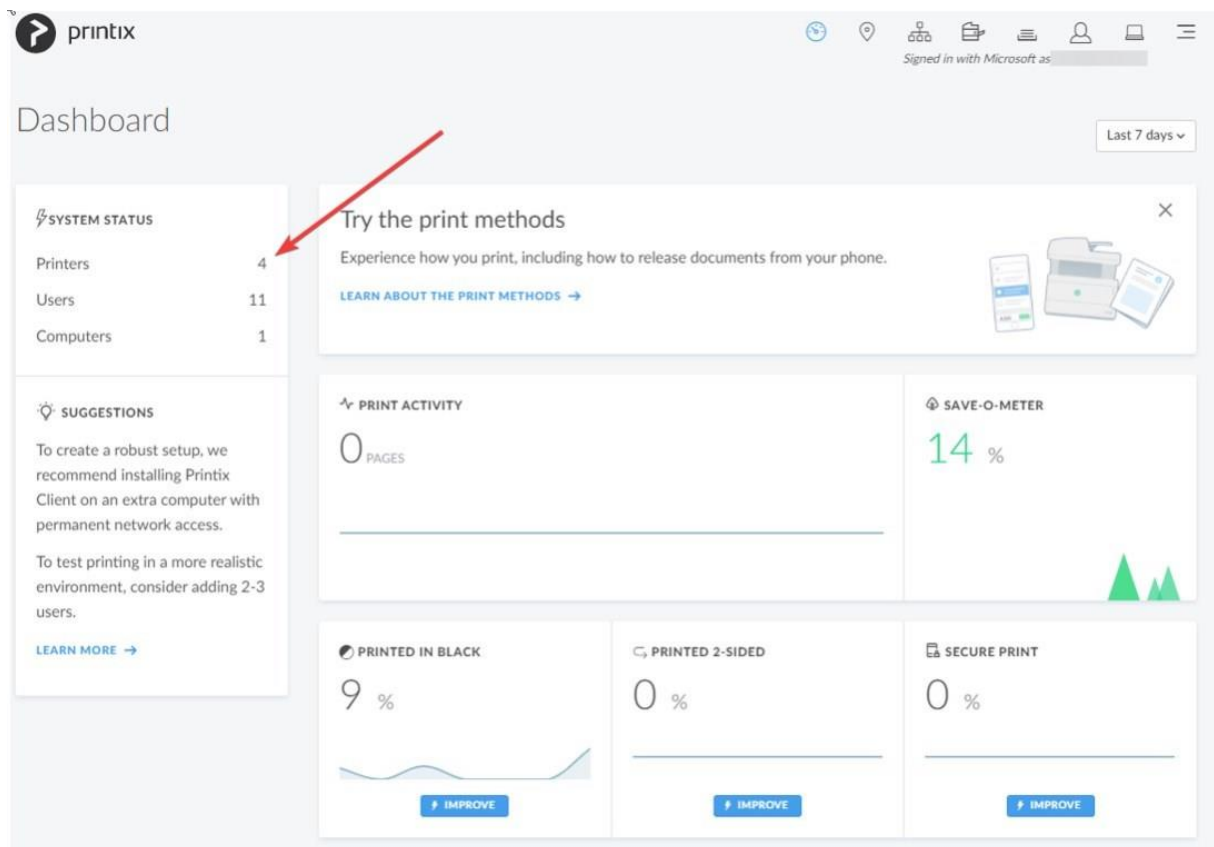


Figure 35: Printix dashboard

Browse to "Printix Cloud Print API"

- 1 Open the drop-down
- 2 Select Software

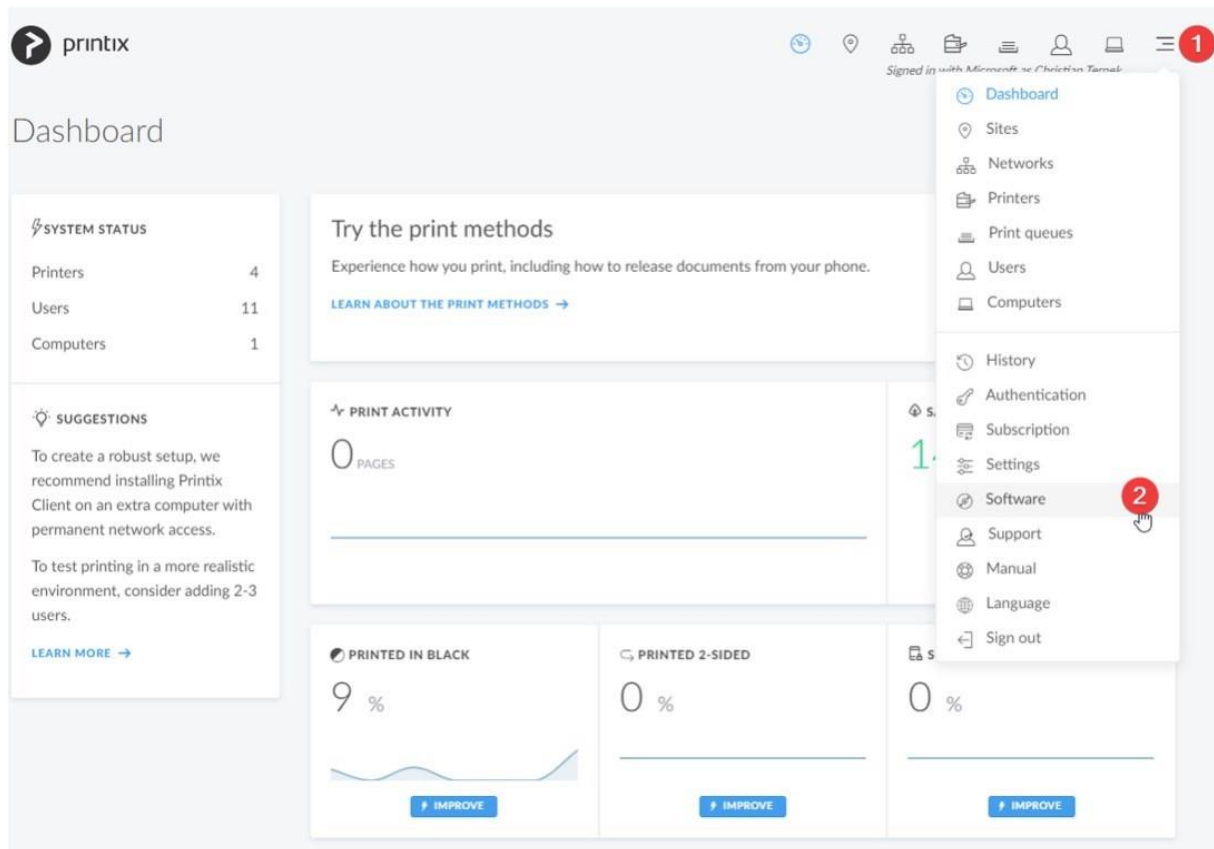


Figure 36: Printix dashboard

This site opens. Now select the **1** "Printix Cloud Print API".

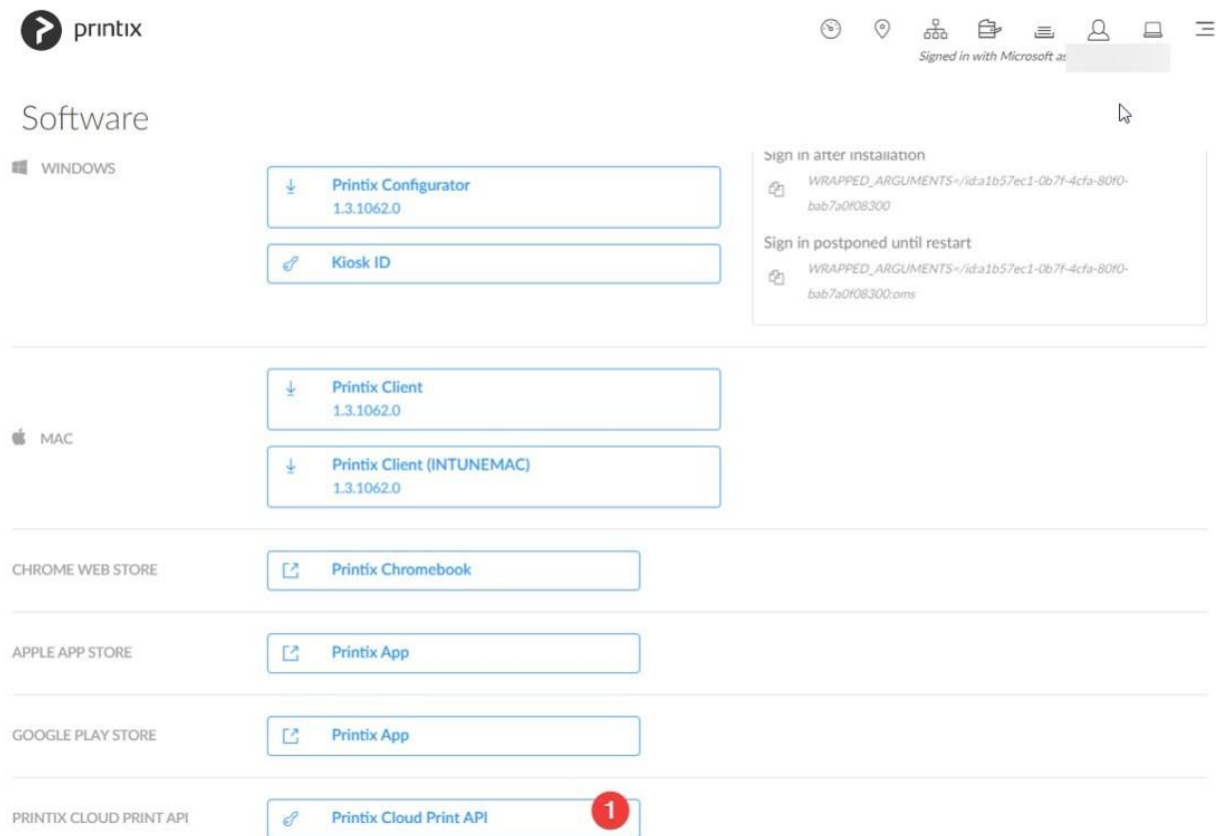


Figure 37: Printix – Software

Generate API Keys: A window opens. Provide a name for your API key (e.g. DCP_printerAPI)

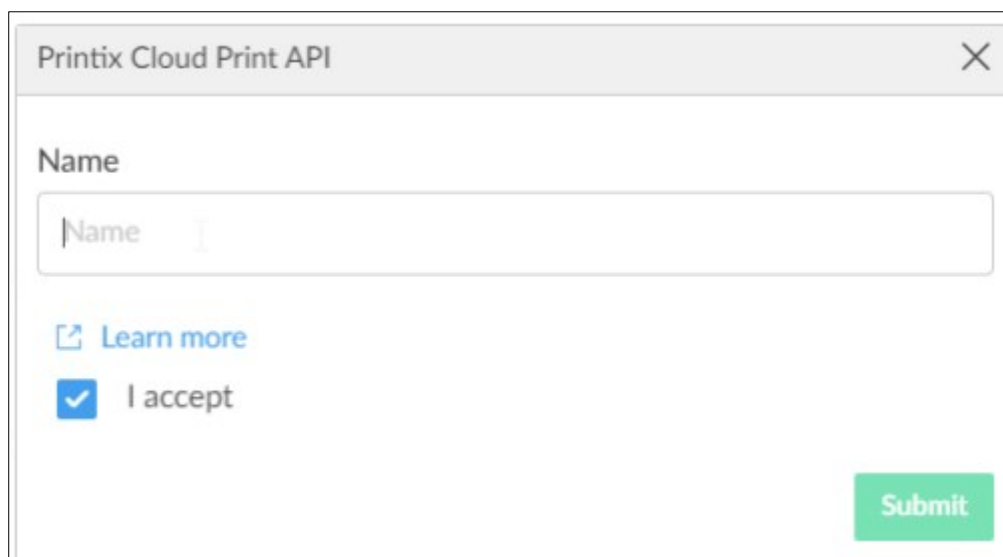


Figure 38: Printix Cloud Print API

Here is where you get the *Client ID*, *Client Secret* and the *Tenant ID*. This information is needed in the next step as outlined below.

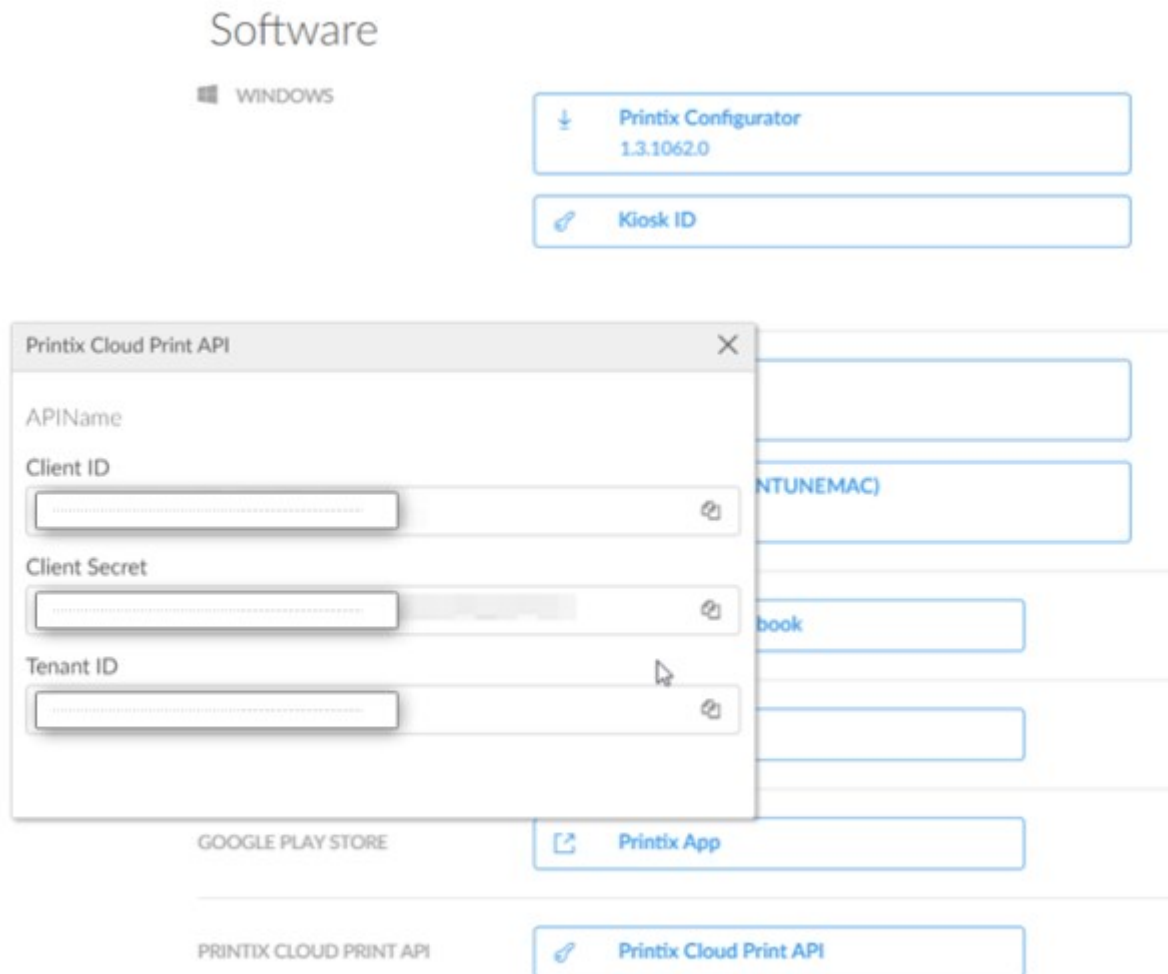


Figure 39: Client ID, Client Secret, Tenant ID

4.2.2 Configure a new "Printix" Printer for DocumentsCorePack

First, log in to the [DocumentsCorePack Service Configuration](#).



Your DocumentsCorepack Service needs to be configured to handle both: Document and Print Jobs. Double click on your service and ensure the Job Type is set to "Both"



Figure 40: Service configuration

Once confirmed, you can start by clicking **[configure cloud print]**.

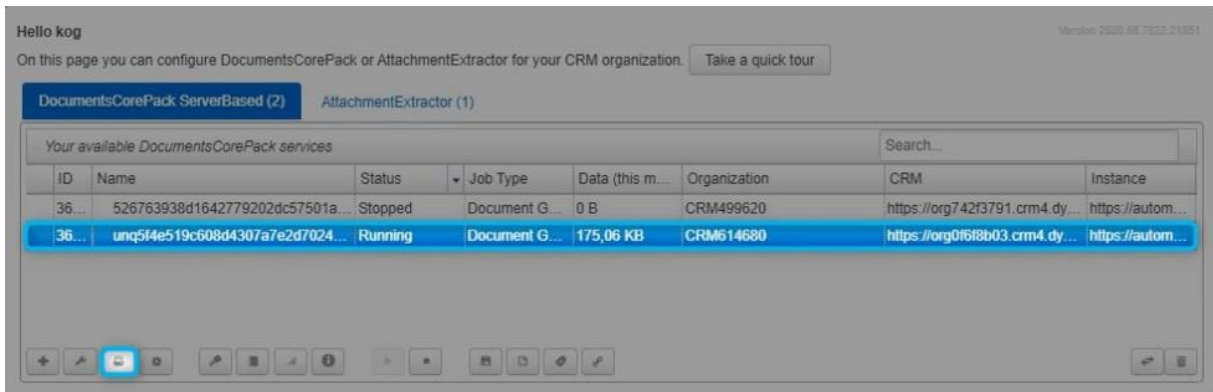


Figure 41: DCP-Service Configuration

This *Cloudprint Configuration* opens. Press the **[+]**-button to add a printer.

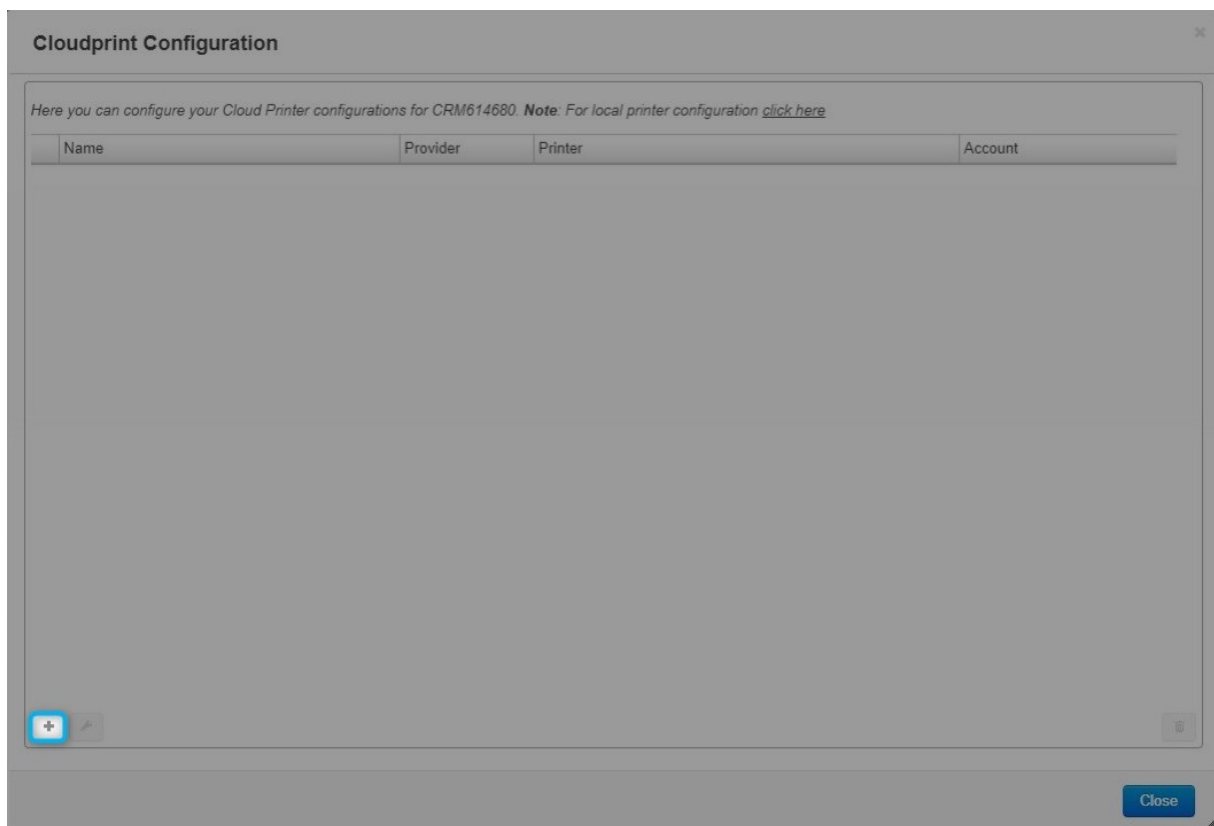


Figure 42: Cloudprint Configuration

The „Configure Cloud Printer Configuration“-site is shown. To configure your Cloud Printer, you have to

- 1 select "Printix" first.
- 2 Name your configuration.
- 3 Type in your credentials like "Client ID" and "Client Secret".
- 4 Press „Get available printers“.

Figure 43: Configure Cloud Printer Configuration

"Printer Settings" – Here you can find a list of all configurable capabilities of your printer. Options listed depend on your printer and/or print driver.



If you want to change the specific setting, untick the checkbox to unlock. Then you are able to modify the value.

If the settings correspond with what you need, press the **[Save Configuration]**-button.

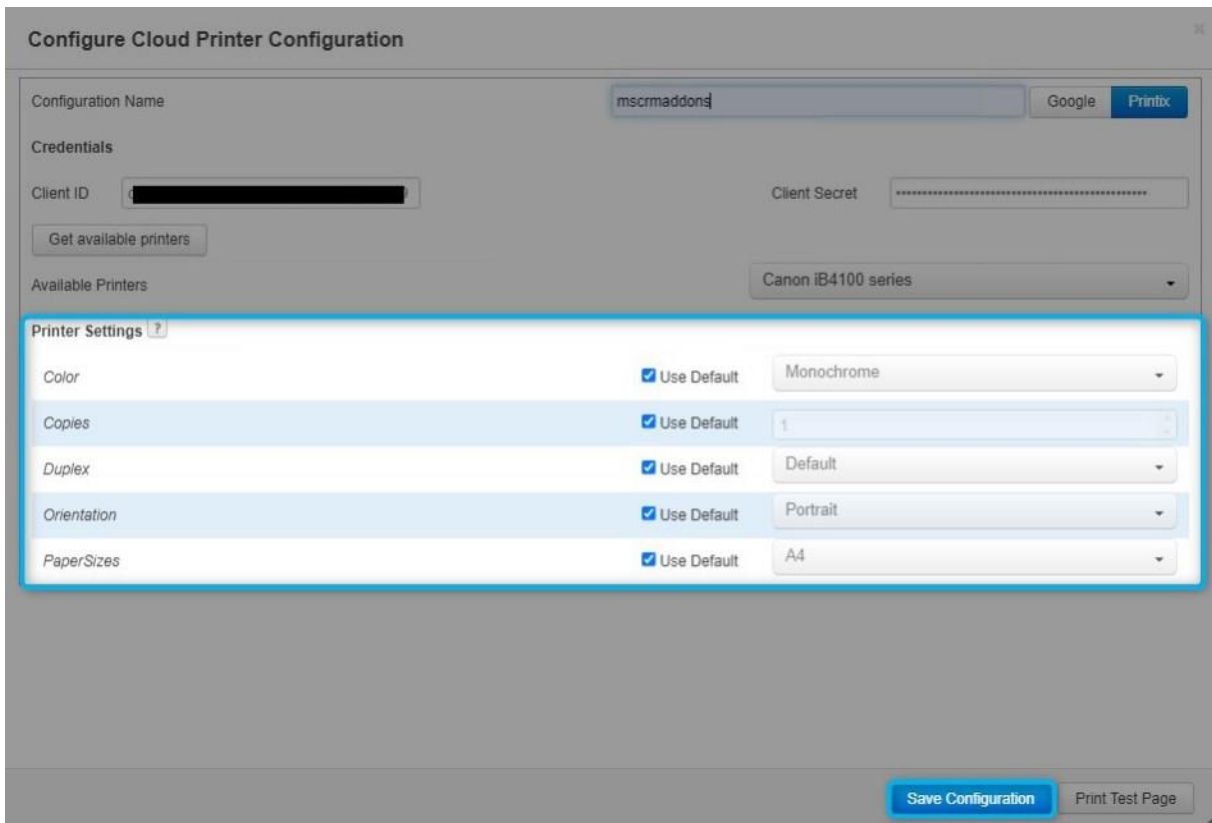


Figure 44: Printer Settings

It's done, your printer is configured and good to go!

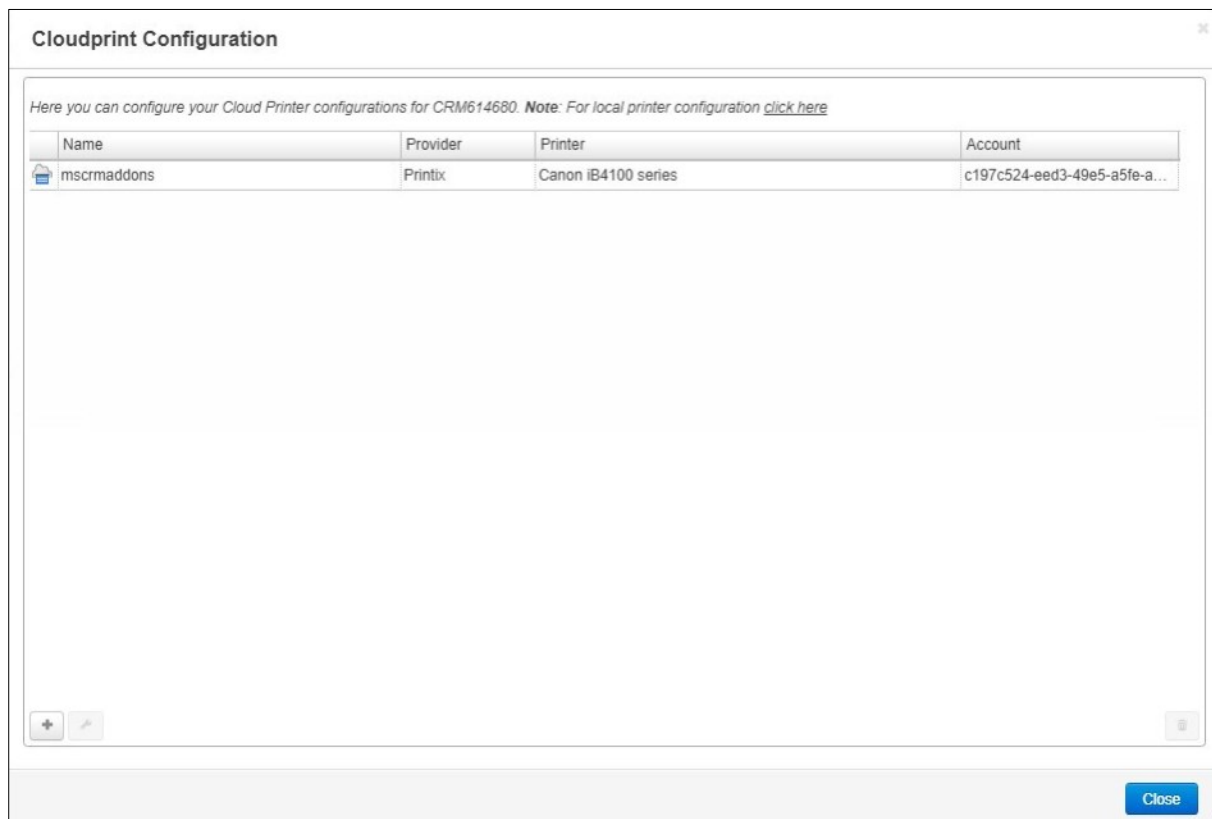


Figure 45: Successful Printer Configuration

4.3 PrintNode – Printer Configuration for DocumentsCorePack

This chapter explains how to configure “PrintNode” printers to be used for printing with DocumentsCorePack.

4.3.1 Prerequisites

You have to be a *PrintNode* customer to use this application. Information on how to configure *Printnode* can be found [here](#).

Once configured we need to get the API Keys. Therefore, open the [PrintNode Dashboard](#).

1 Select in the menu on the left side “Print Something” and then click on “API Keys”

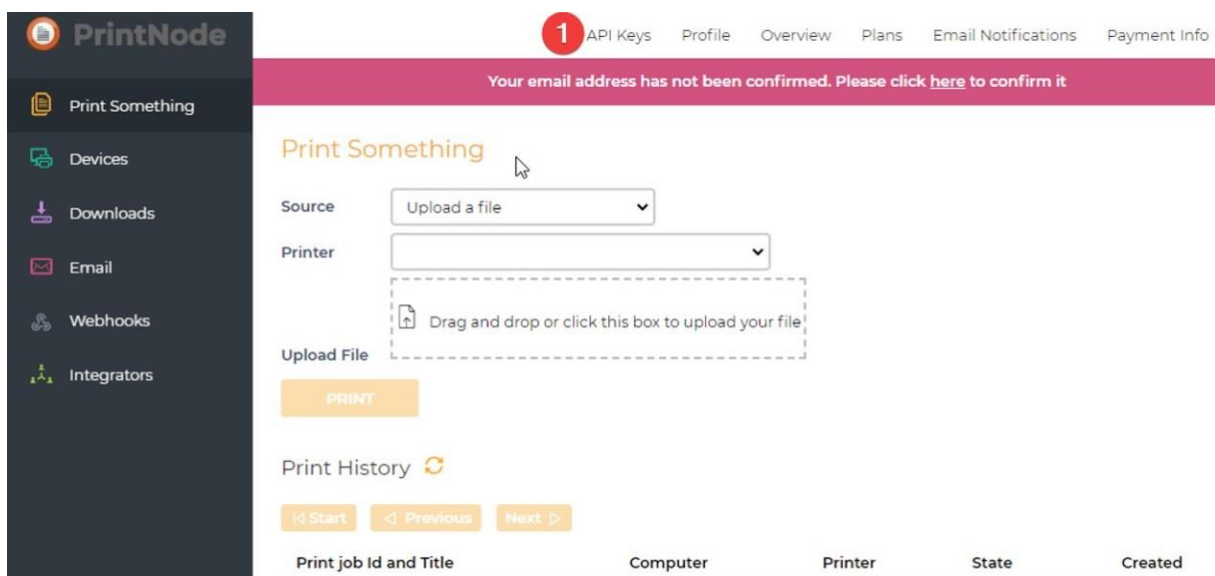


Figure 46: PrintNode Dashboard

Provide a name your API Key and press the **[Create]**-button.

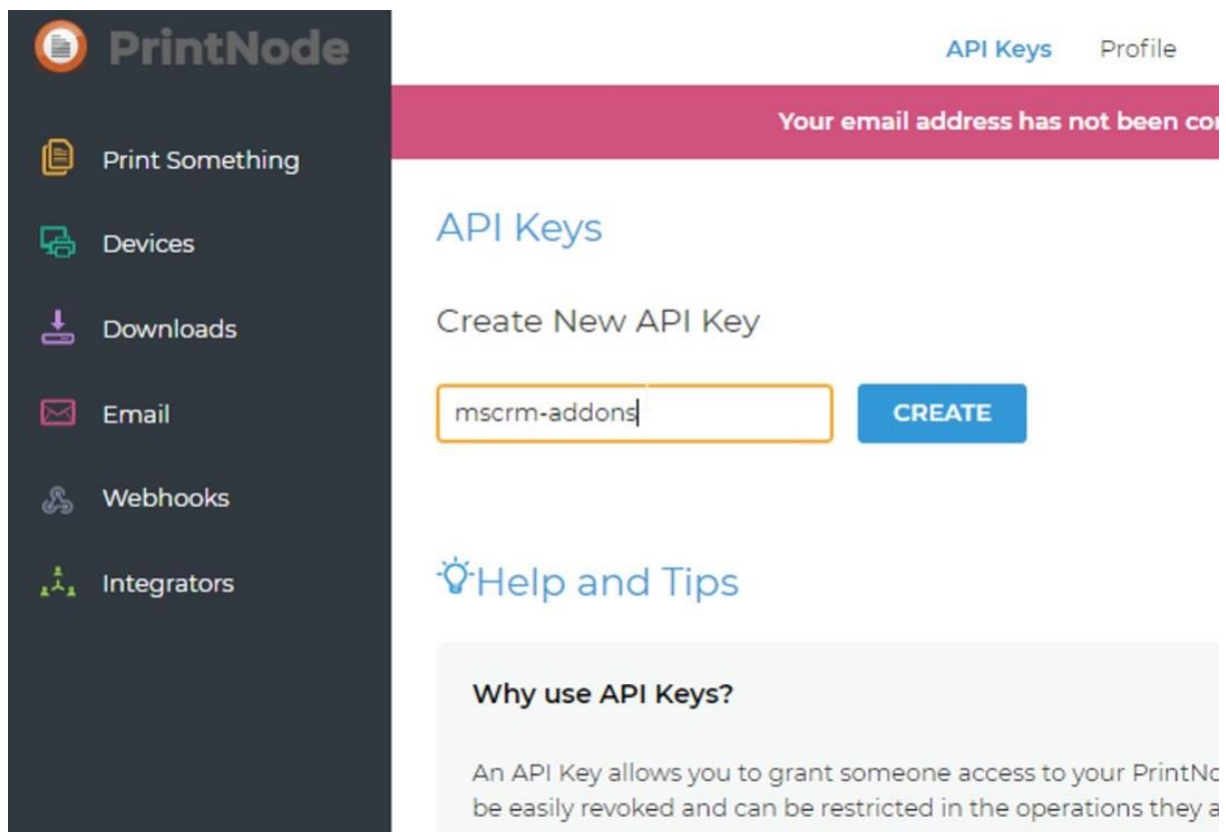


Figure 47: Generated API Key

Your API Key is generated. This Key is needed in the next step as outlined below.

4.3.2 Configure a new "PrintNode" Printer for DocumentsCorePack

First, log in to the [DocumentsCorePack Service Configuration](#).



Your DocumentsCorepack Service needs to be configured to handle both: Document and Print Jobs. Double click on your service and ensure the Job Type is set to "Both"



Figure 48: Service configuration

Once confirmed, you can start by clicking **[configure cloud print]**.

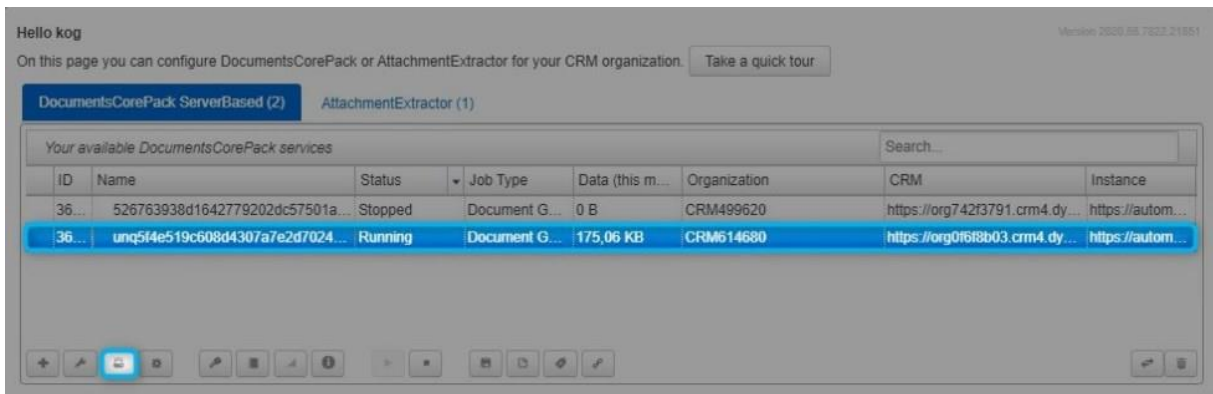


Figure 49: DCP-Service Configuration

This *Cloudprint Configuration* opens. Press the **[+]**-button to continue.

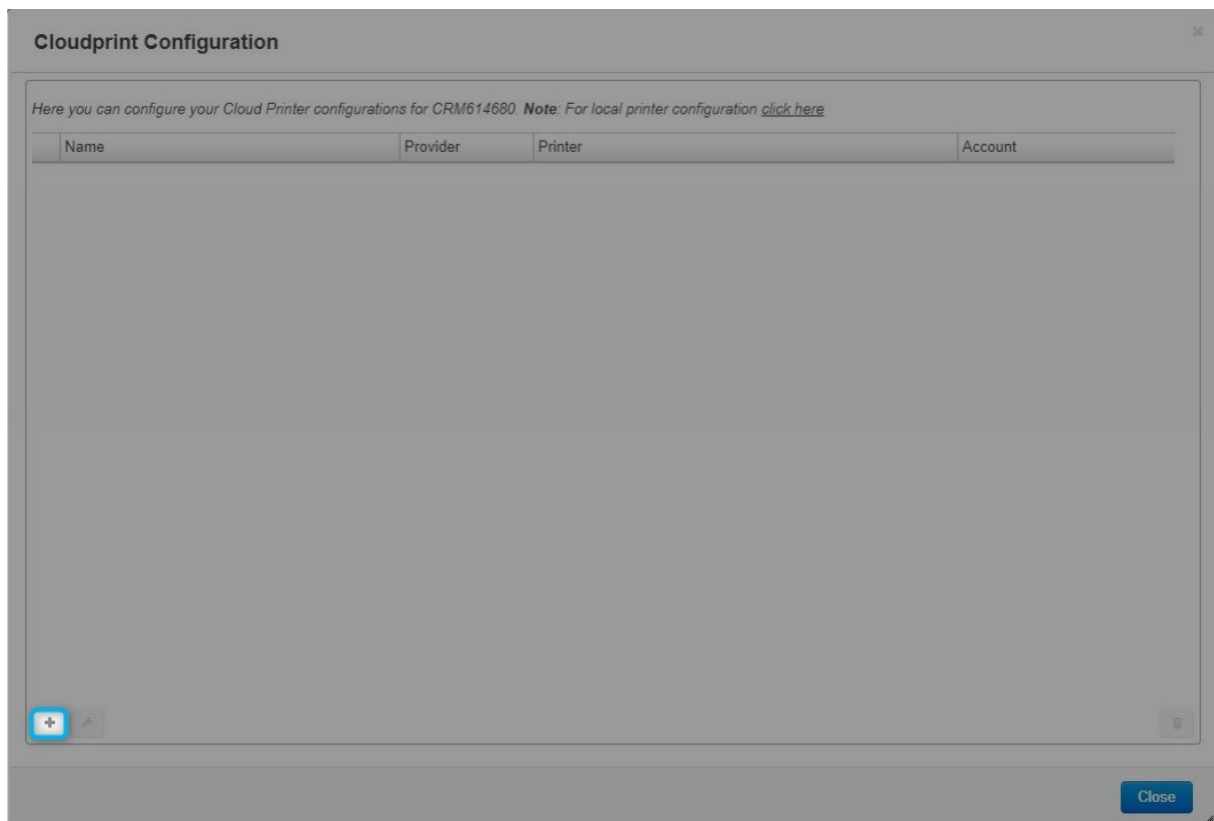


Figure 50: Cloudprint configuration

The „Configure Cloud Printer Configuration“-site is shown. To configure your PrintNode – Cloud Printer, you have to

- 1 Select „PrintNode“.
- 2 Name your configuration.
- 3 Enter the „API Key“ you generated earlier and
- 4 Press „Get available printers“.

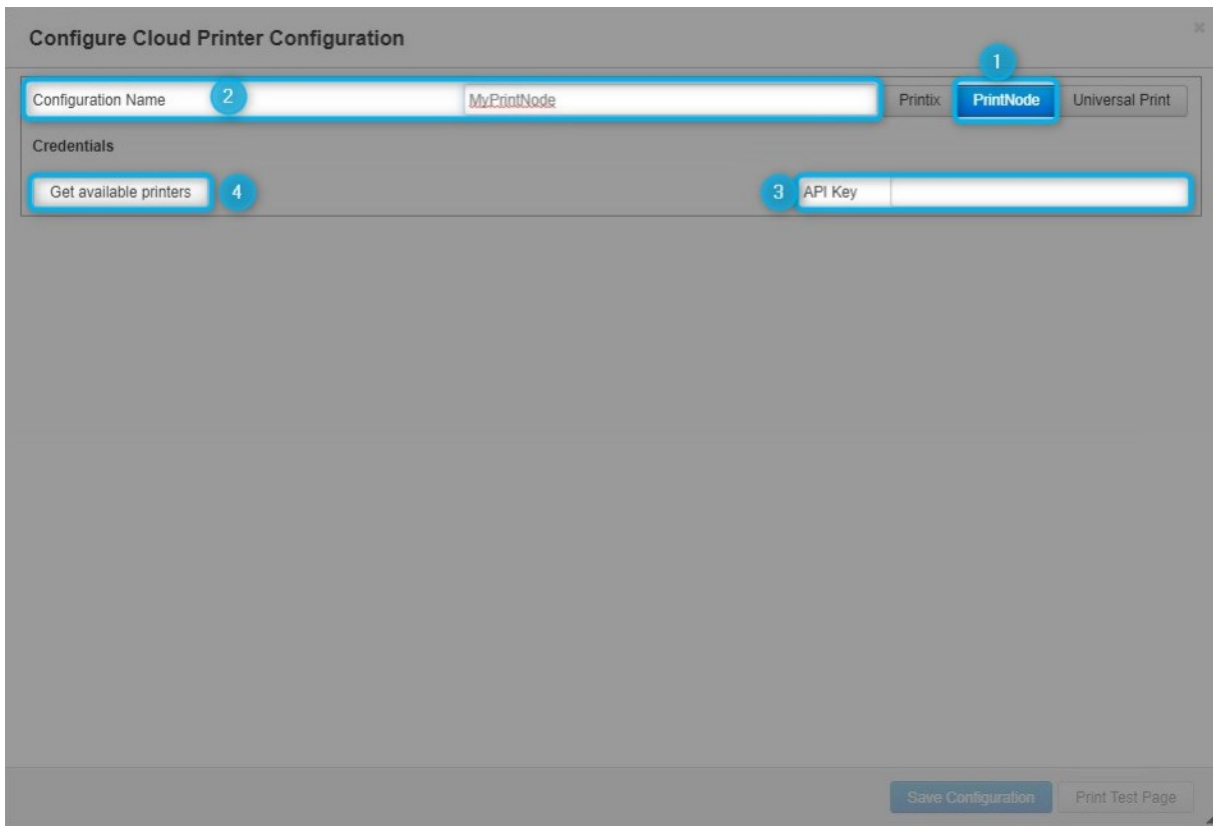


Figure 51: Configure PrintNode

The “Available Printes” drop-down lists all printers received from PrintNode. Select the printer you want to configure.

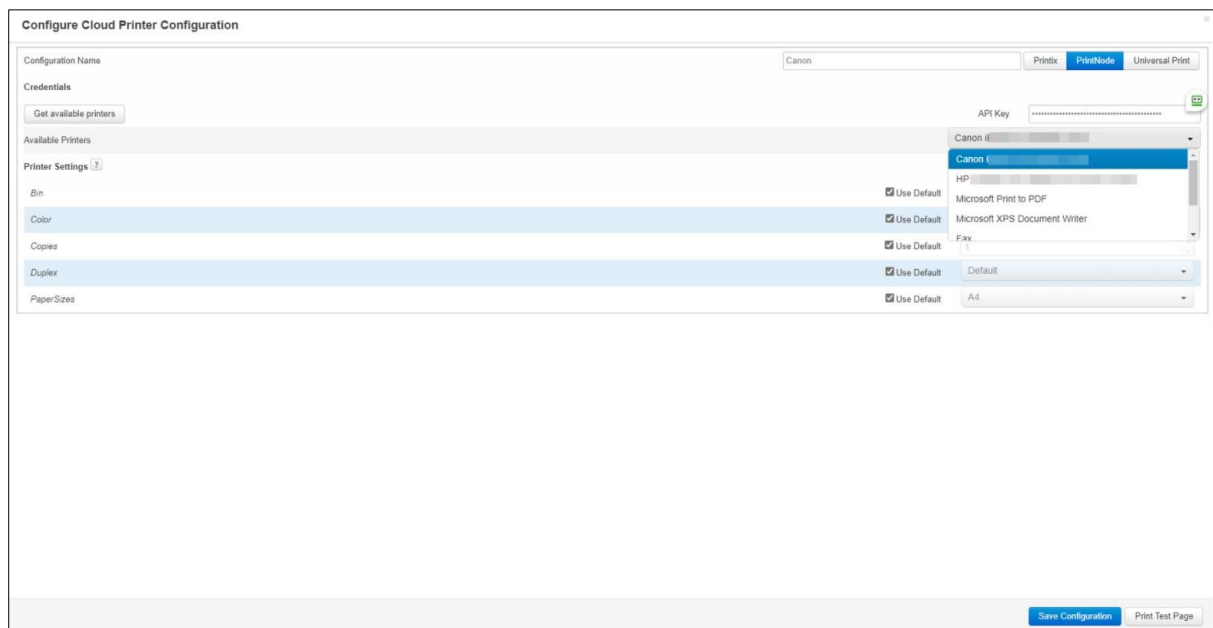


Figure 52: Available printers

"Printer Settings" - Here you can find a list of all configurable capabilities of your printer. Options listed depend on your printer and/or print driver.

Please note: If you want to change the specific setting, untick the checkbox to unlock. Then you are able to modify the value.

If the settings correspond with what you need, press the **[Save Configuration]**-button. It's done, your printer is configured and good to go!

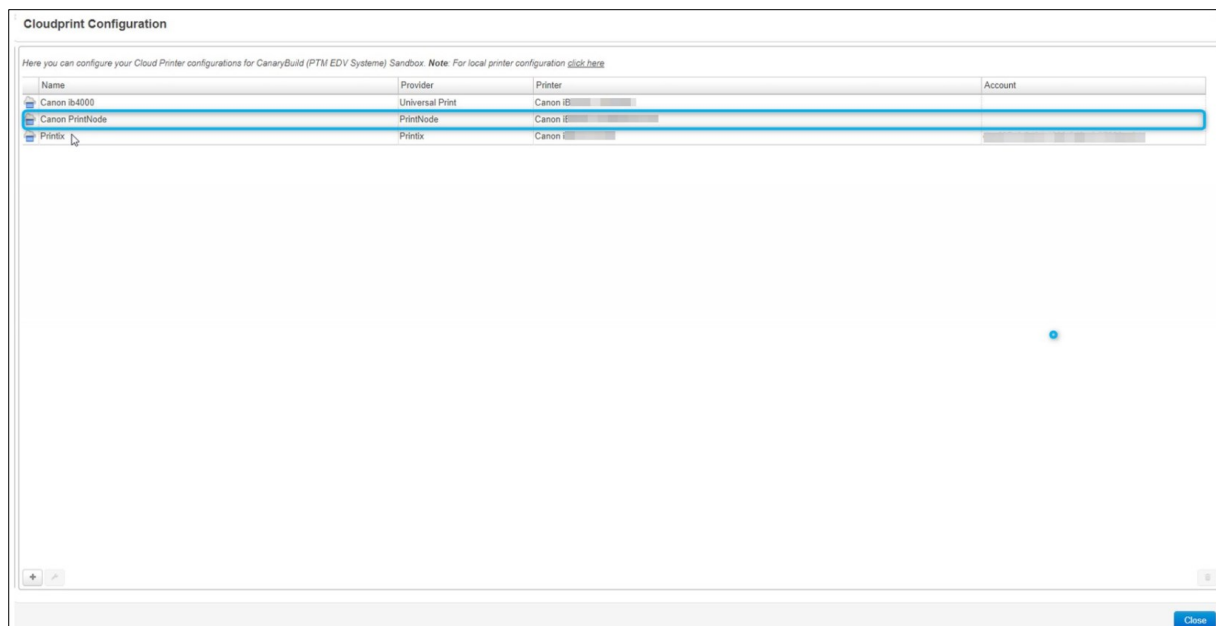


Figure 53: Successfully installed PrintNode Printer

List of figures

Figure 1: Start service configuration	6
Figure 2: Create a new service or select an existing one	7
Figure 3: Create a new service or select an existing one	8
Figure 4: Select the CRM type	9
Figure 5: Connection success.....	9
Figure 6: Possible issue with CRM connection dialog	9
Figure 7: Possible issue with CRM connection dialog	10
Figure 8: CRM connection setup	11
Figure 9: Click on the start service button	12
Figure 10: Select a printer	12
Figure 11: Configure a printer	13
Figure 12: Local printer test pages	14
Figure 13: Installer DCPPrintApplication for Dynamics 365	14
Figure 14: End User License Agreement (EULA).....	15
Figure 15: Change installation folder	16
Figure 16: Confirm the installation	16
Figure 17: Installation status Connect to Dynamics 365.....	17
Figure 18: Dynamics 365 Connection setup	18
Figure 19: Finish installation.....	19
Figure 20: DCPPrintApplication Overview-tabs.....	20
Figure 21: DCPPrintApplication Printer-tab	21
Figure 22: Configure a printer	22
Figure 23: DCPPrintApplication Printer-tab: Configured printer	23
Figure 24: DCPPrintApplication General-tab/ Configured printer	24
Figure 25: DCPPrintApplication in the Task Pane	25
Figure 26: DocumentsCorePack Dialog – Print.....	25
Figure 27: Universal Print Dashboard	26
Figure 28: Service configuration.....	27
Figure 29: DCP-Service Configuration.....	27
Figure 30: Cloudprint configuration.....	28
Figure 31: Get available printers.....	29
Figure 32: Sign in	29
Figure 33: Available printers in your environment	30
Figure 34: Installed Universal Print	30
Figure 35: Printix dashboard	31
Figure 36: Printix dashboard	32
Figure 37: Printix – Software	33
Figure 38: Printix Cloud Print API.....	33
Figure 39: CLient ID, Client Secret, Tenant ID	34
Figure 40: Service configuration	35
Figure 41: DCP-Service Configuration.....	35
Figure 42: Cloudprint Configuration	36

Figure 43: Configure Cloud Printer Configuration	37
Figure 44: Printer Settings.....	38
Figure 45: Successful Printer Configuration.....	38
Figure 46: PrintNode Dashboard	39
Figure 47: Generated API Key.....	40
Figure 48: Service configuration.....	41
Figure 49: DCP-Service Configuration.....	41
Figure 50: Cloudprint configuration.....	42
Figure 51: Configure PrintNode.....	43
Figure 52: Available printers.....	43
Figure 53: Successfully installed PrintNode Printer	44

Contact

For further technical questions, please visit our blog <https://support.mscrm-addons.com/> or contact support@mscrm-addons.com.

For sales and licensing questions please contact office@mscrm-addons.com or the corresponding contact information below.



Headquarter – Europe

PTM EDV-Systeme GmbH
Bahnhofgürtel 59
A-8020 Graz
Austria

Tel Austria +43 316 680-880-0
Fax +43 316 680-880-25

Support:
7AM - 7PM GMT+1 (Monday-Friday)

Sales:
+43 316 680 880 14
sales@mscrm-addons.com

www.ptm-edv.at
www.mscrm-addons.com



Headquarter – US

mscrm-addons.com Corp
1860 North Rock Springs Rd
Atlanta, GA 30324
United States

Tel US +1 404 720 6066

Support:
9AM - 6PM EST (Monday-Friday)

Sales:
+1 404 720 6046
ussales@mscrm-addons.com

www.mscrm-addons.com